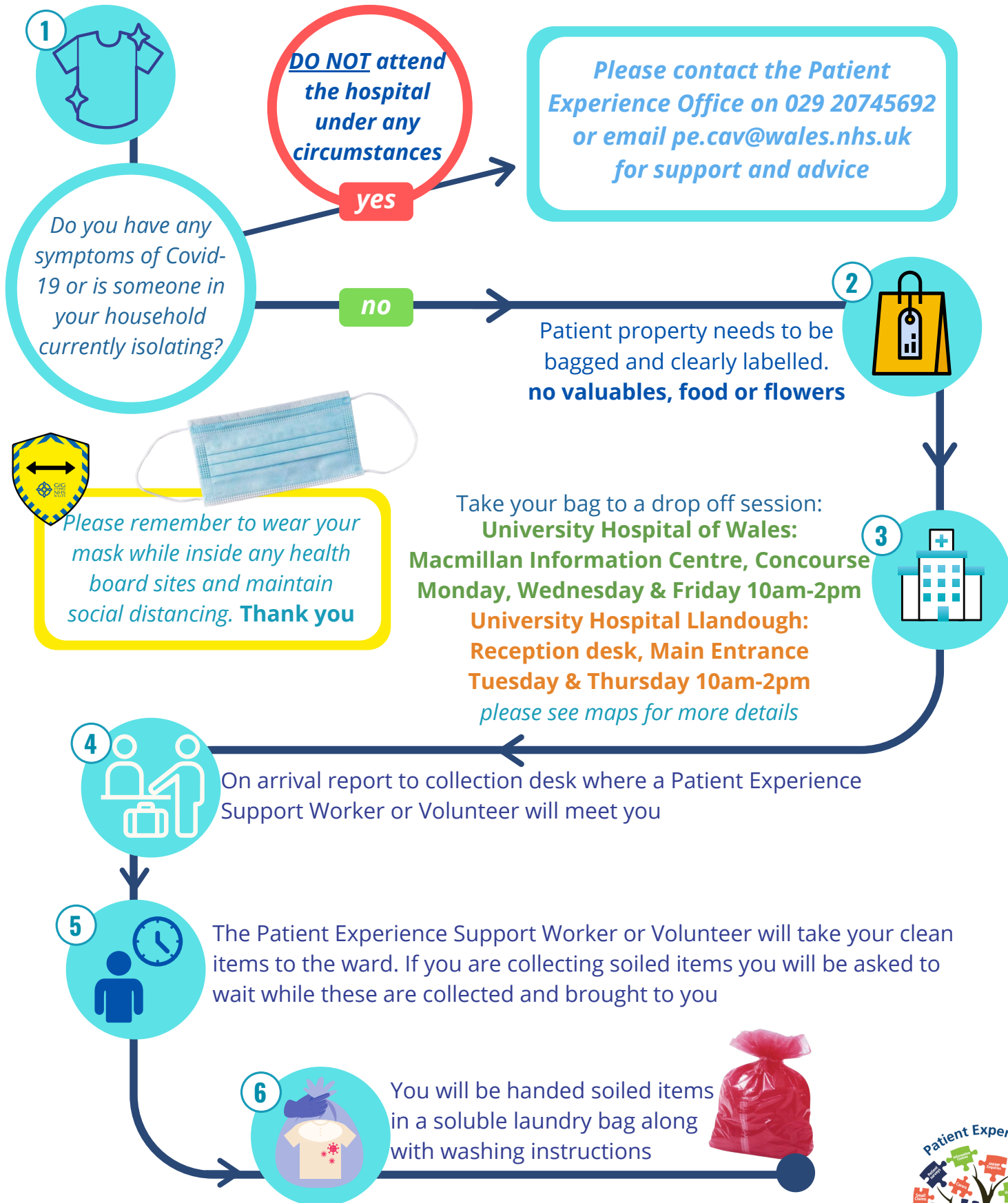




Patient Clothing & Toiletries

Family, Friend & Carer Guidance

If your family or friend requires essential items of clothing and/or toiletries please follow this process



Please remember to wear your mask while inside any health board sites and maintain social distancing. **Thank you**

Take your bag to a drop off session:
University Hospital of Wales:
Macmillan Information Centre, Concourse
Monday, Wednesday & Friday 10am-2pm
University Hospital Llandough:
Reception desk, Main Entrance
Tuesday & Thursday 10am-2pm
please see maps for more details