



# **Cardiff and Vale University Health Board**

## **Organisational Structures**

**Updated July 2012**



# CONTENTS

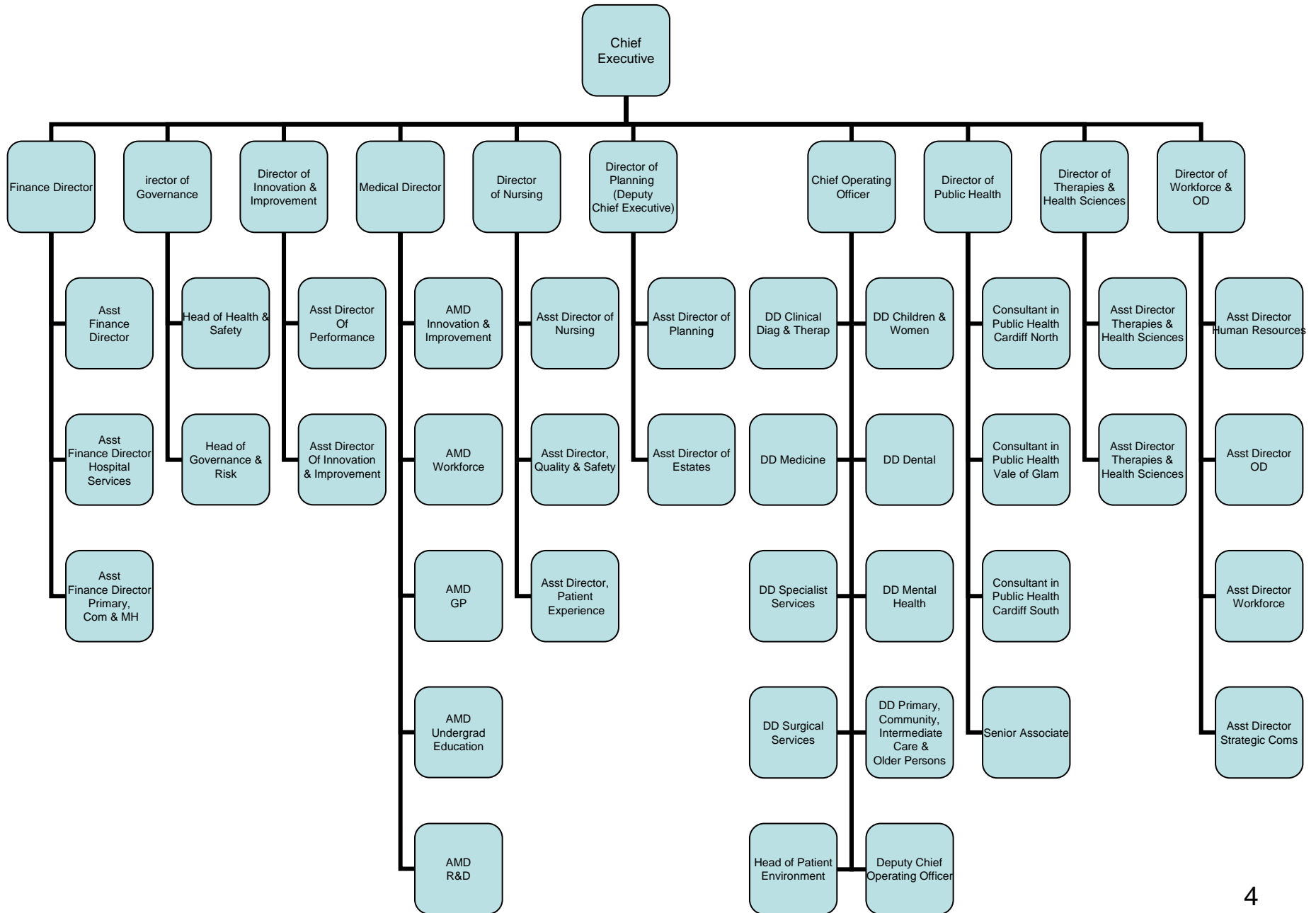
<b>Executive Structure</b>	<b>3</b>	<b>Governance</b>	<b>22</b>
<b>Divisional Structure Overall</b>	<b>5</b>	<b>Innovation &amp; Improvement</b>	<b>24</b>
Clinical Diagnostics & Therapeutics	8	<b>Medical</b>	<b>26</b>
Medicine	9	<b>Nursing</b>	<b>28</b>
Specialist Services	10	Assistant Director of Nursing	29
Surgical Services	11	Patient Experience	30
Children & Women	12	Quality & Safety	31
Dental	13	<b>Planning – to follow</b>	<b>32</b>
Mental Health	14	<b>Pharmacy - to follow</b>	<b>34</b>
Primary, Community & Intermediate Care	15	<b>Public Health</b>	<b>34</b>
<b>Finance</b>	<b>16</b>	<b>Therapies &amp; Health Science</b>	<b>36</b>
Acute University Hospital Services	17	<b>Workforce &amp; OD</b>	<b>38</b>
All Wales Oracle Team	18	Strategic Communication	39
Corporate & Strategy	19	Human Resources	40
Primary Community & Mental Health	20	Organisation Development	41
<b>Procurement – to follow</b>	<b>21</b>	Workforce	42



GIG  
CYMRU  
NHS  
WALES

Bwrdd Iechyd Prifysgol  
Caerdydd a'r Fro  
Cardiff and Vale  
University Health Board

# EXECUTIVE STRUCTURE

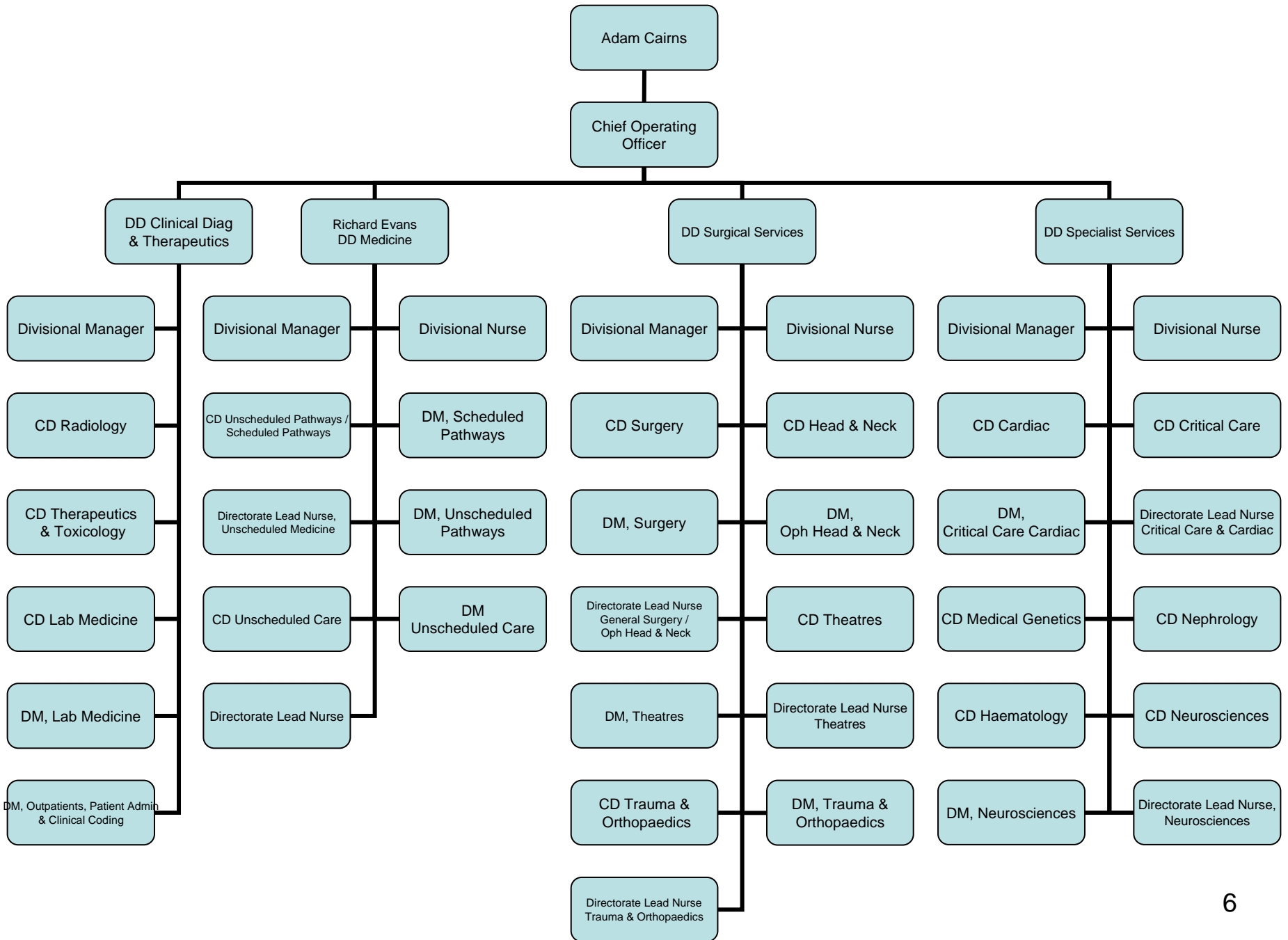


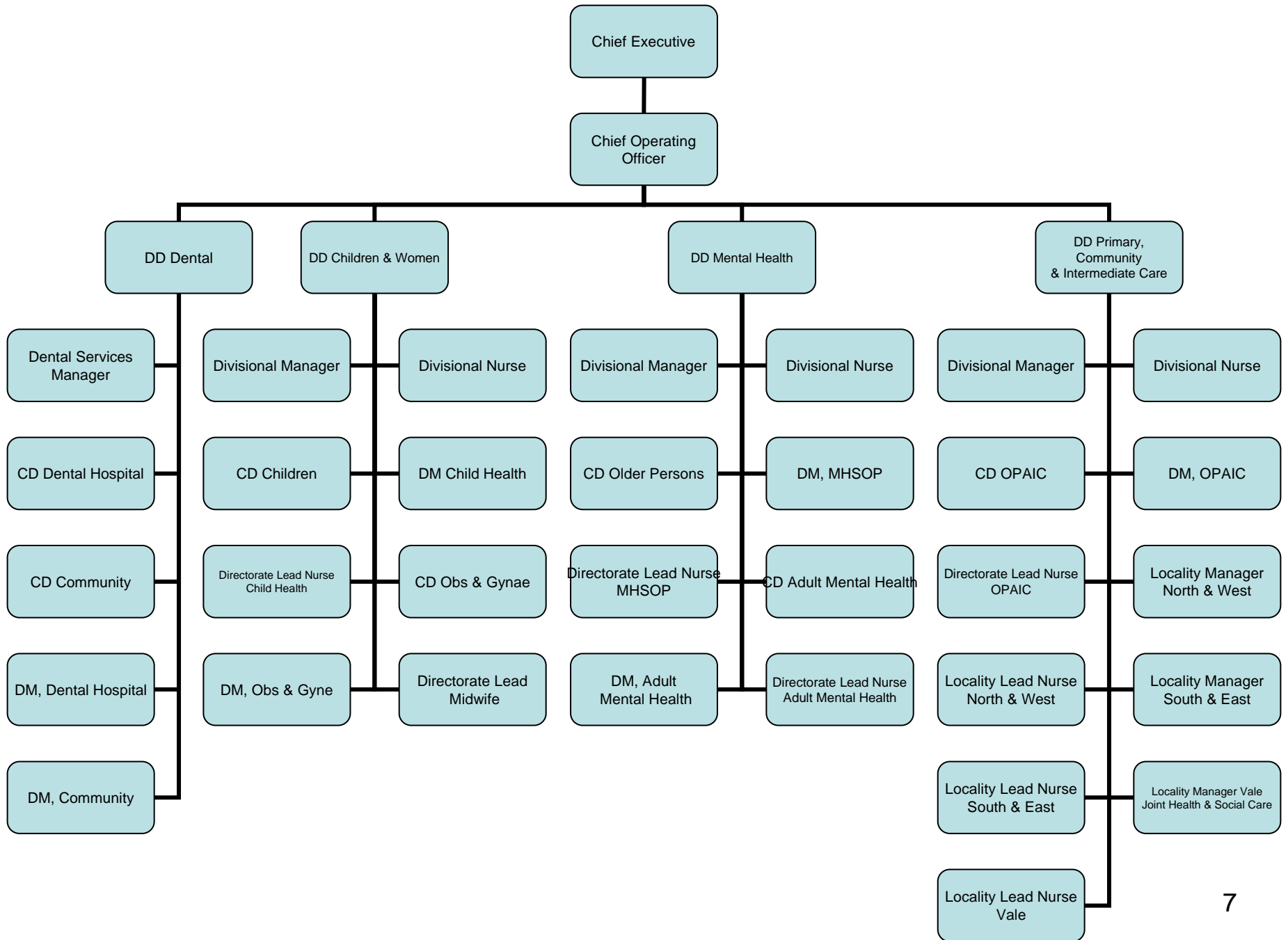


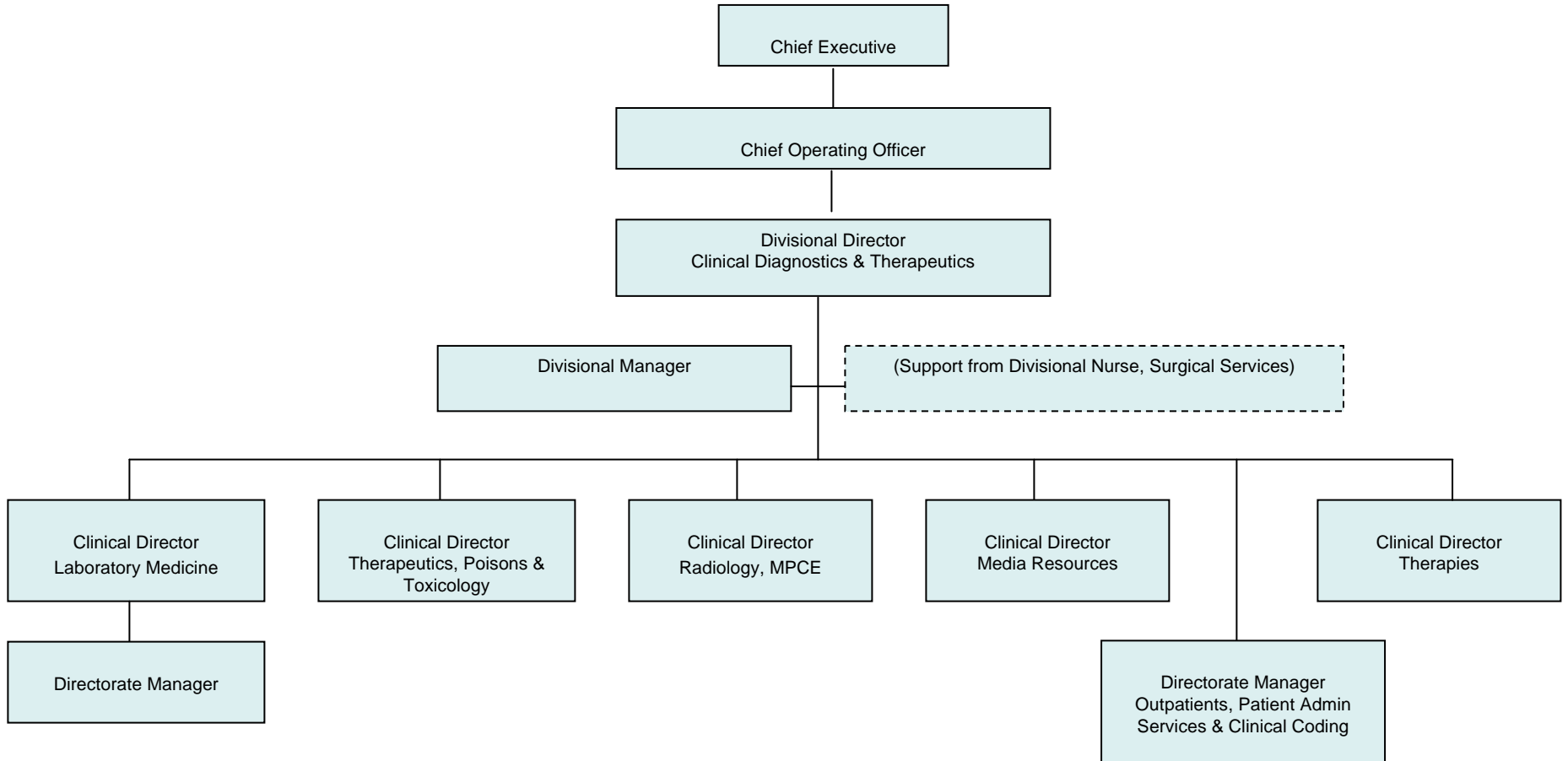
GIG  
CYMRU  
NHS  
WALES

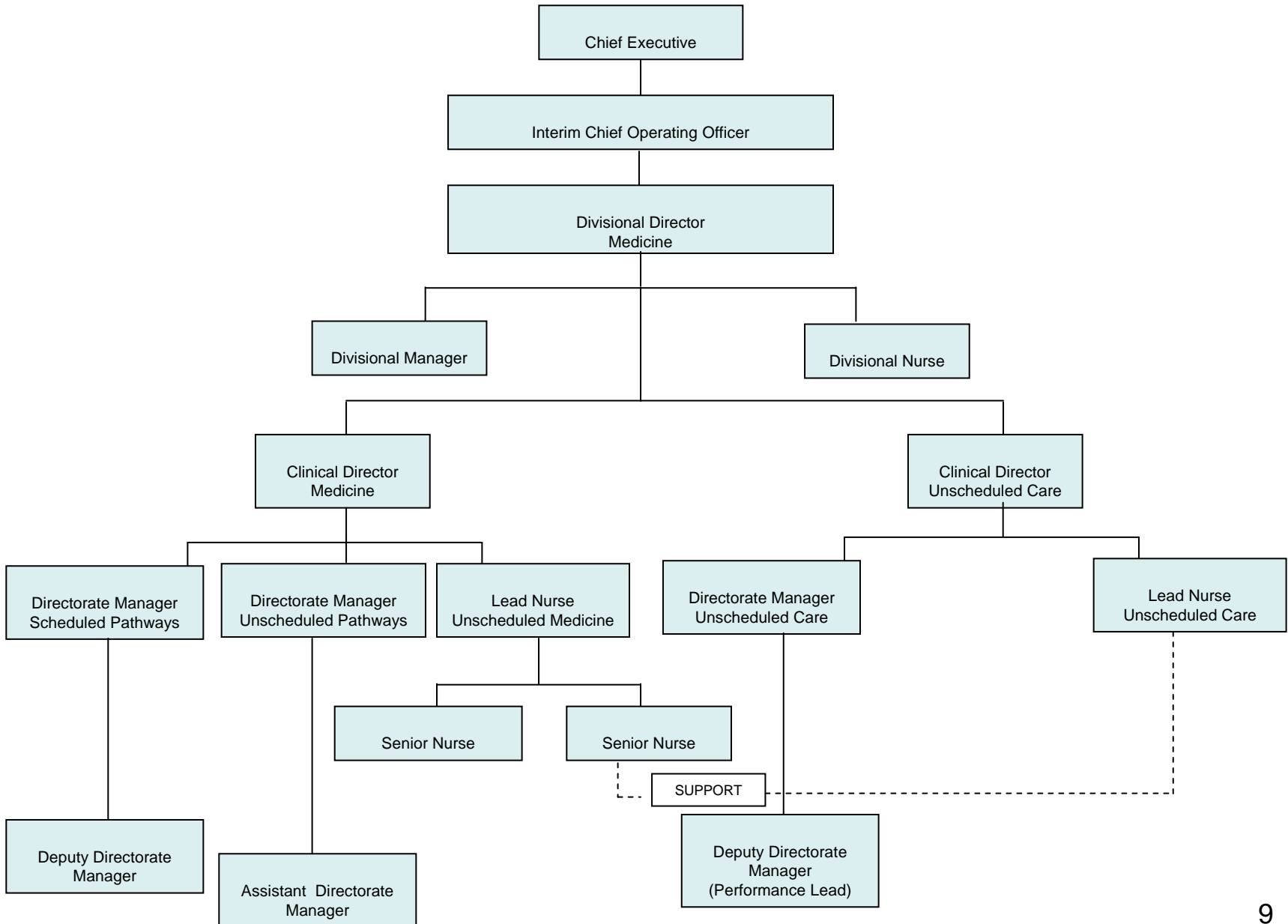
Bwrdd Iechyd Prifysgol  
Caerdydd a'r Fro  
Cardiff and Vale  
University Health Board

# DIVISIONAL STRUCTURE



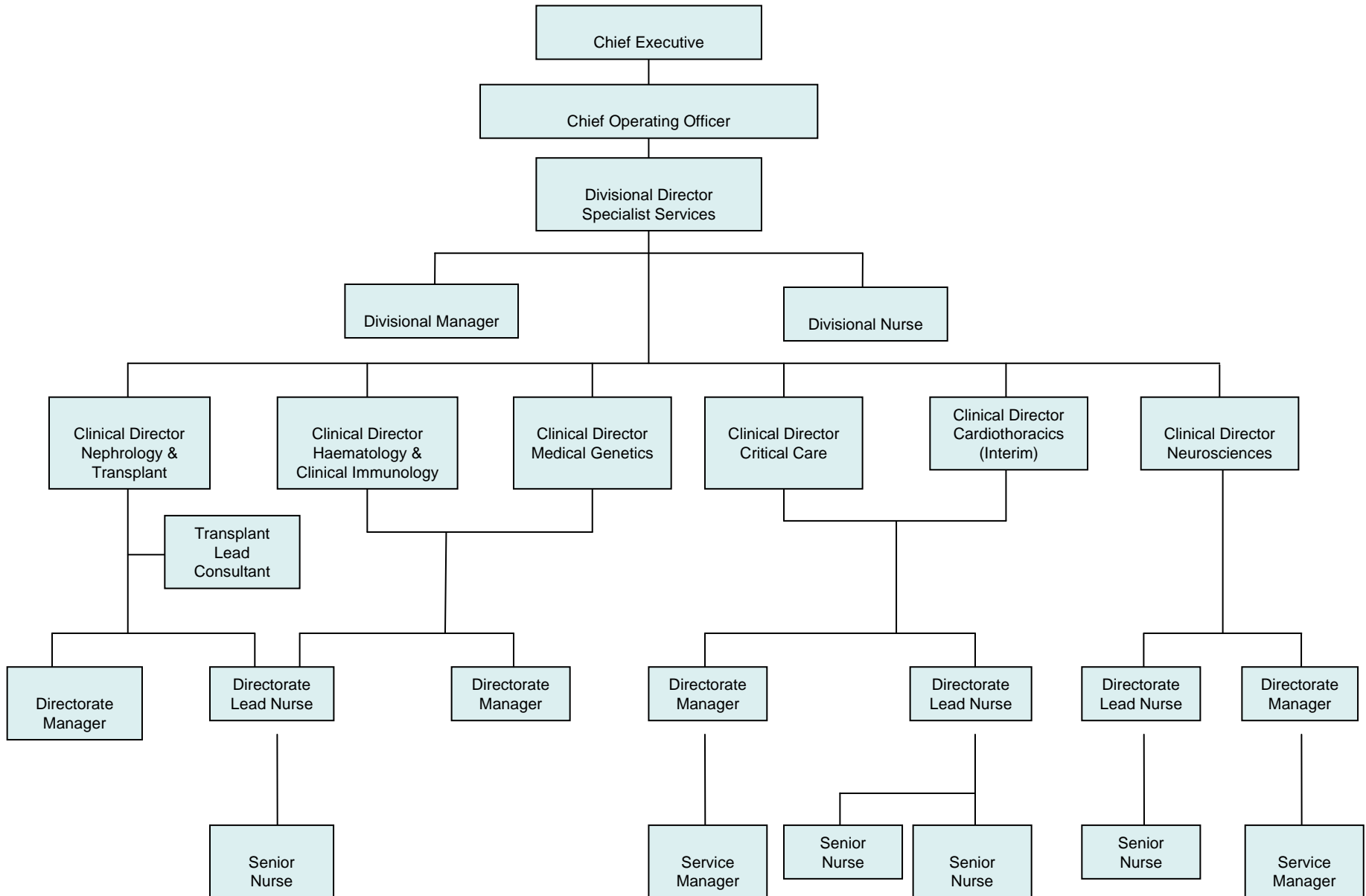




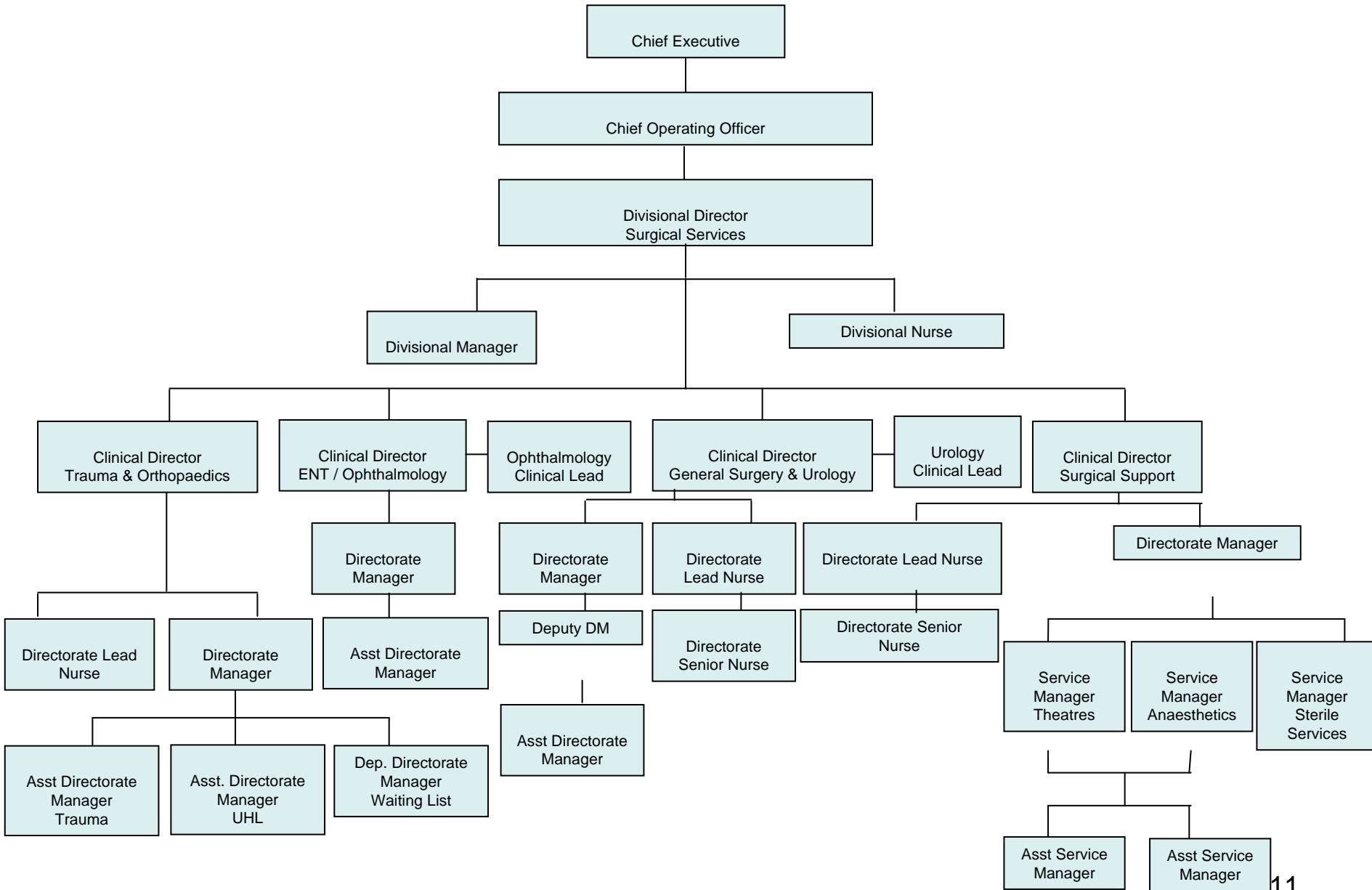


**CARDIFF AND VALE UNIVERSITY HEALTH BOARD  
SPECIALIST SERVICES DIVISION**

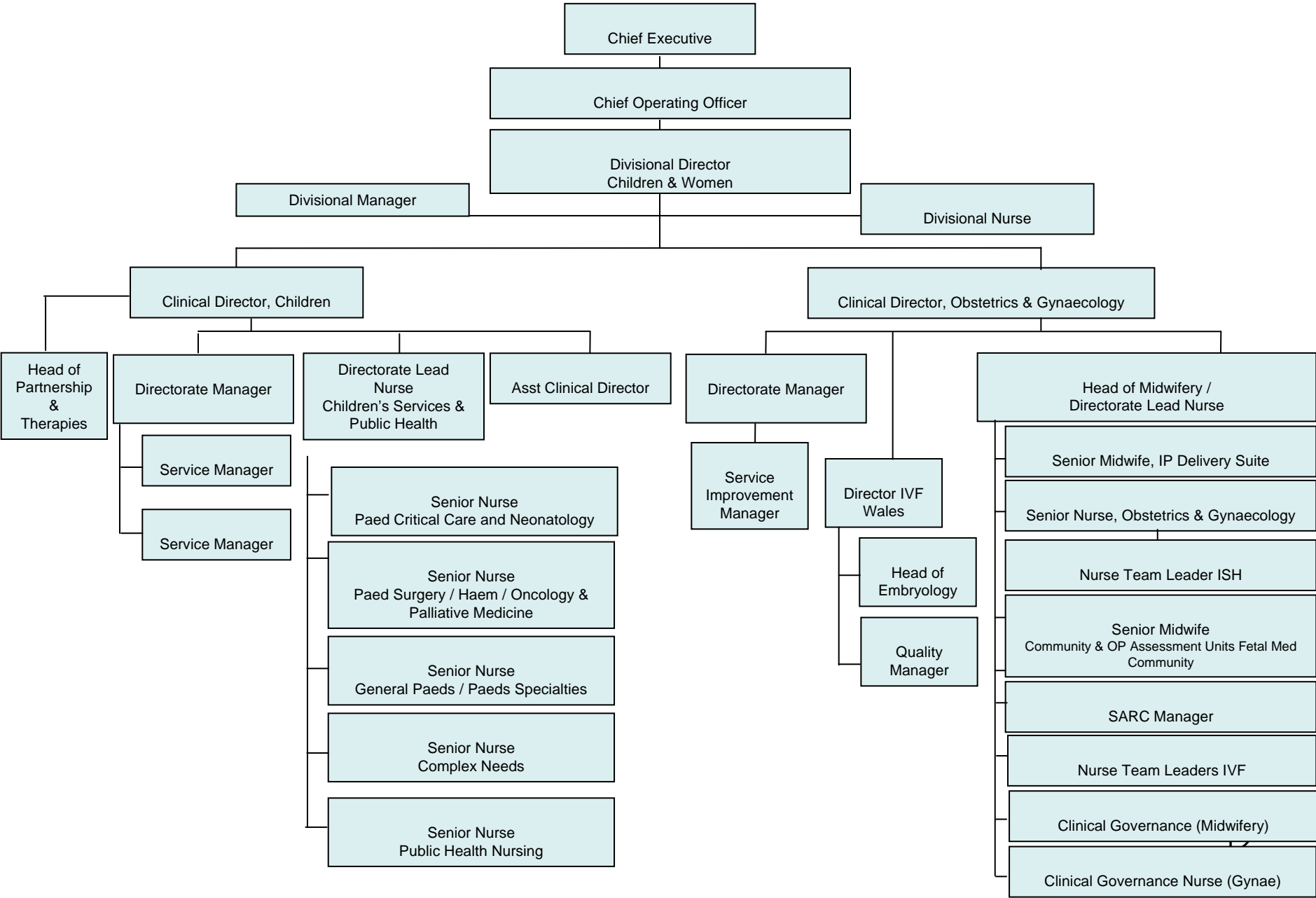
---

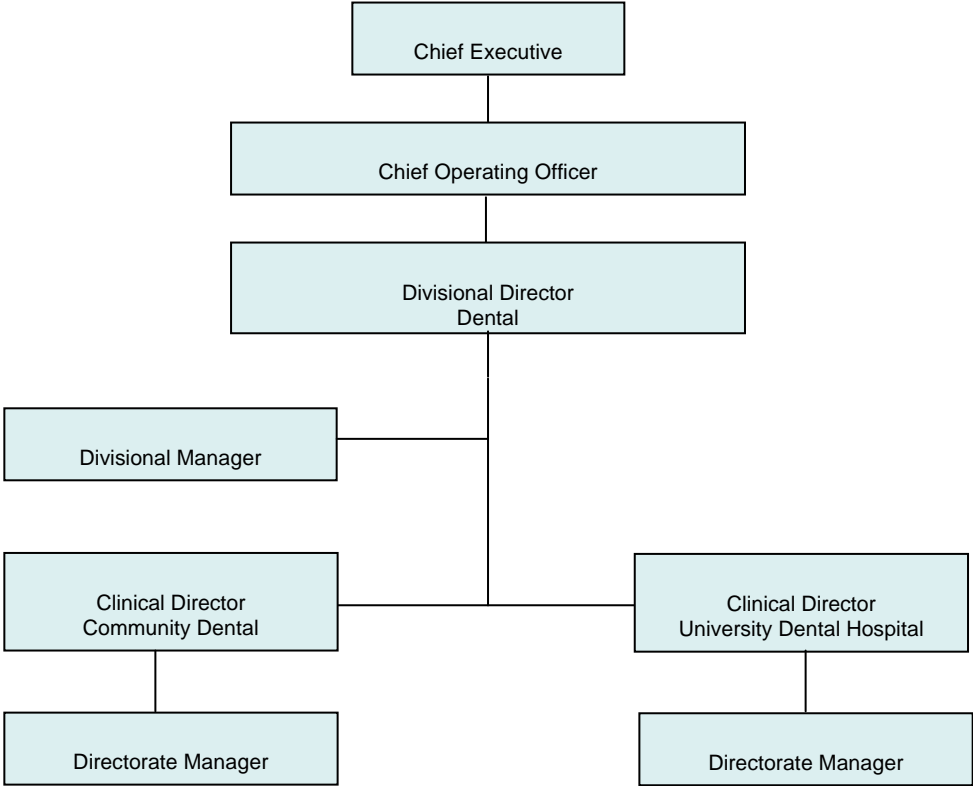


**CARDIFF AND VALE UNIVERSITY HEALTH BOARD  
SURGICAL SERVICES DIVISION**



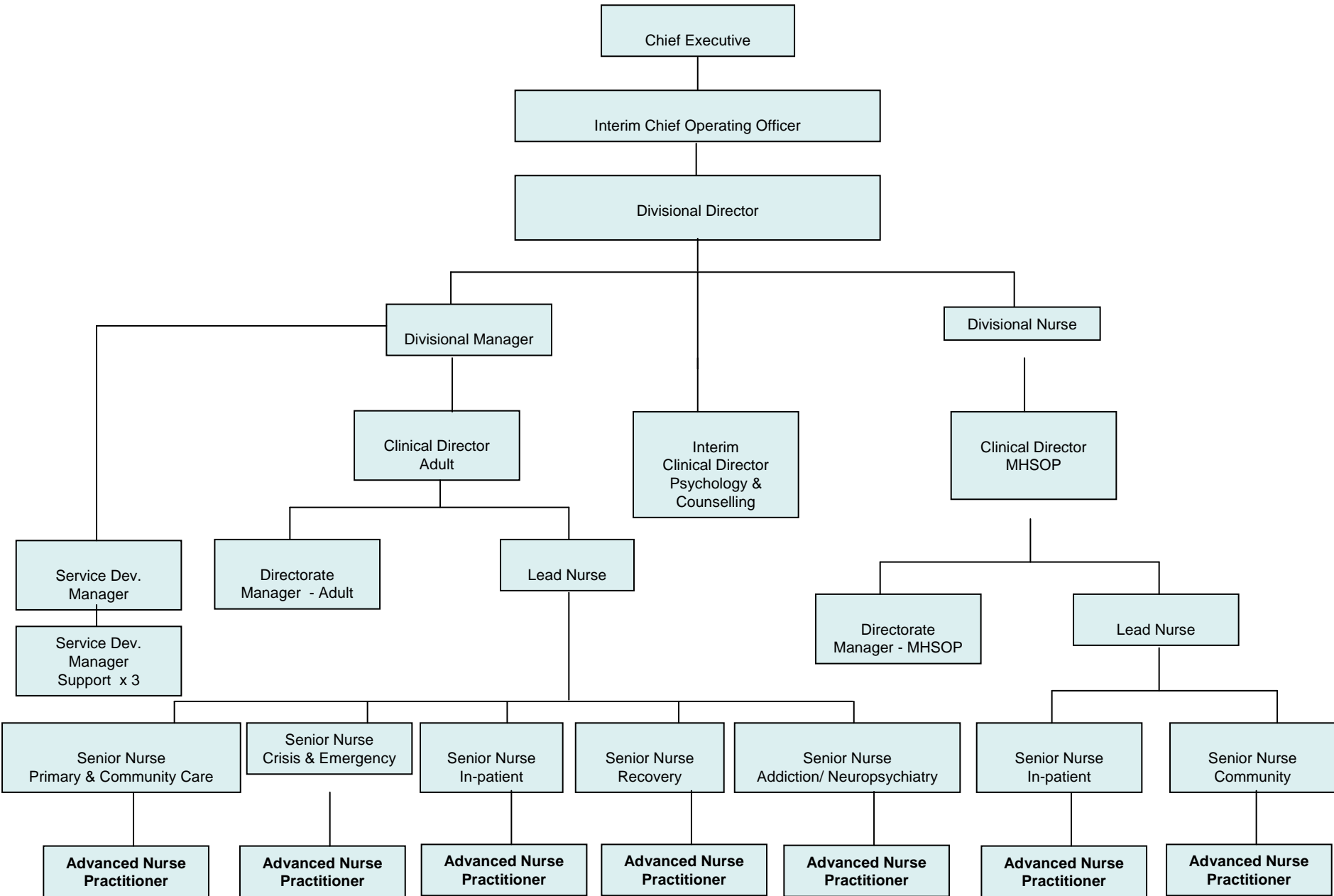
**CARDIFF AND VALE UNIVERSITY HEALTH BOARD  
CHILDREN & WOMEN DIVISION**



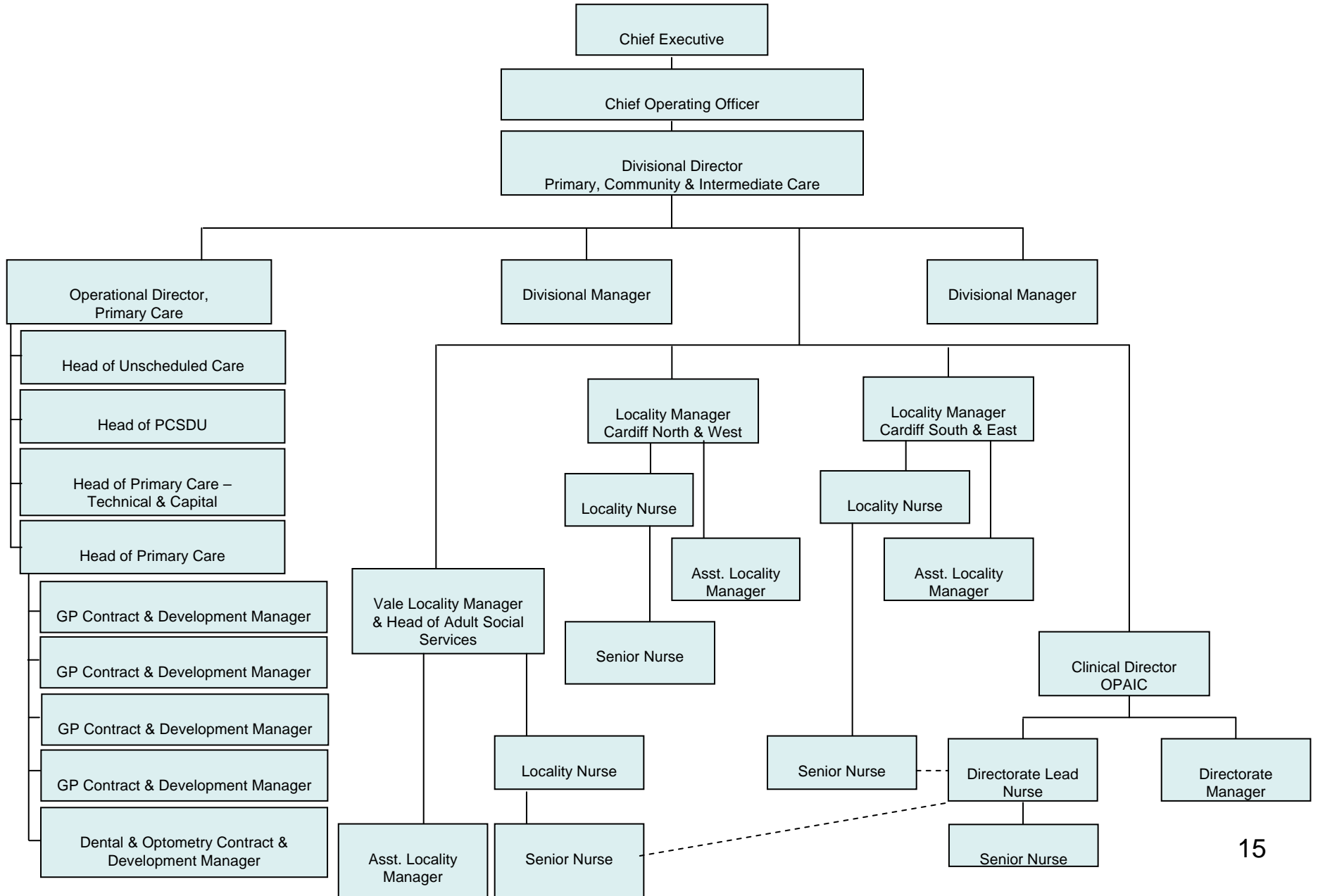


**CARDIFF AND VALE UNIVERSITY HEALTH BOARD  
MENTAL HEALTH DIVISION**

---

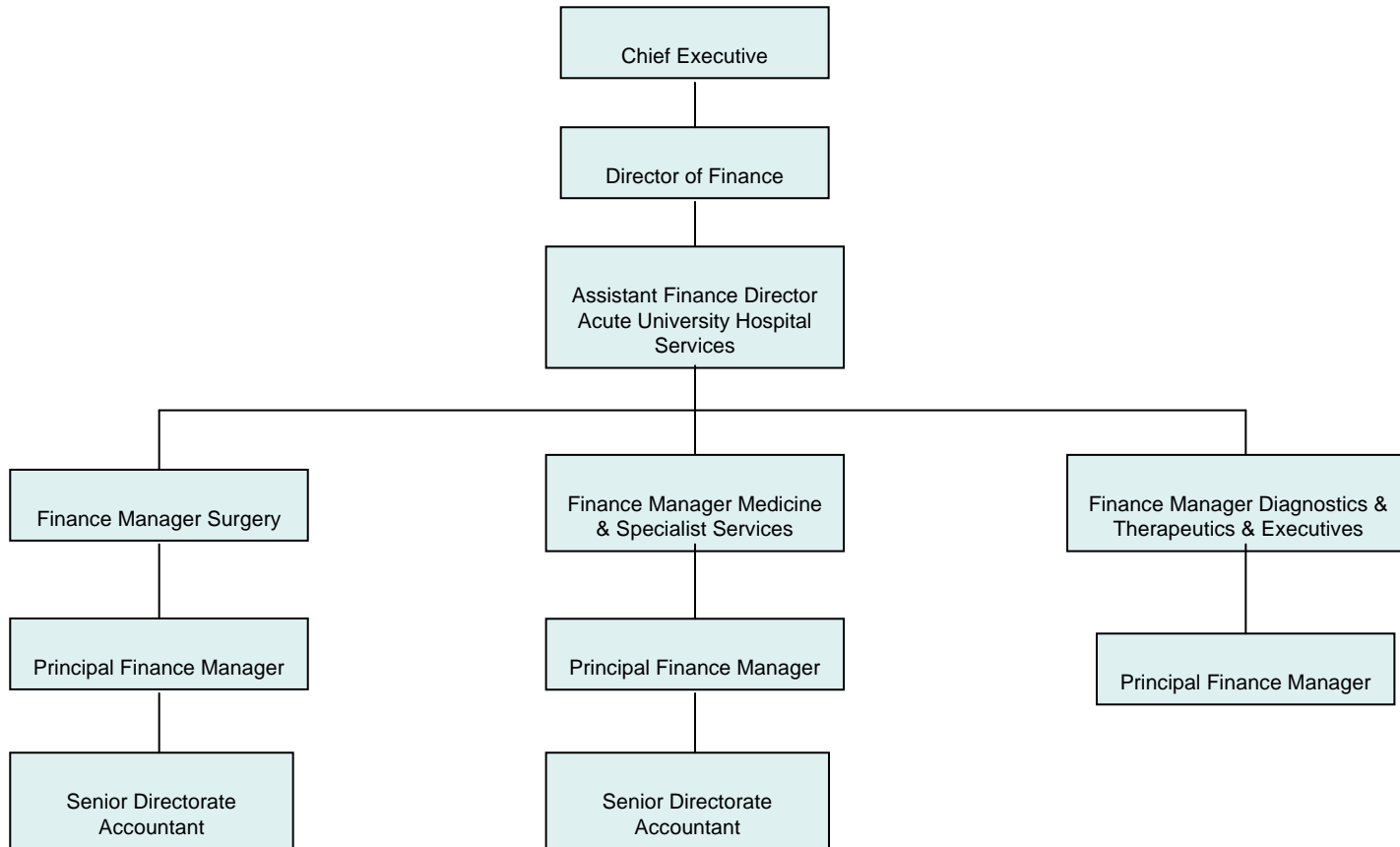


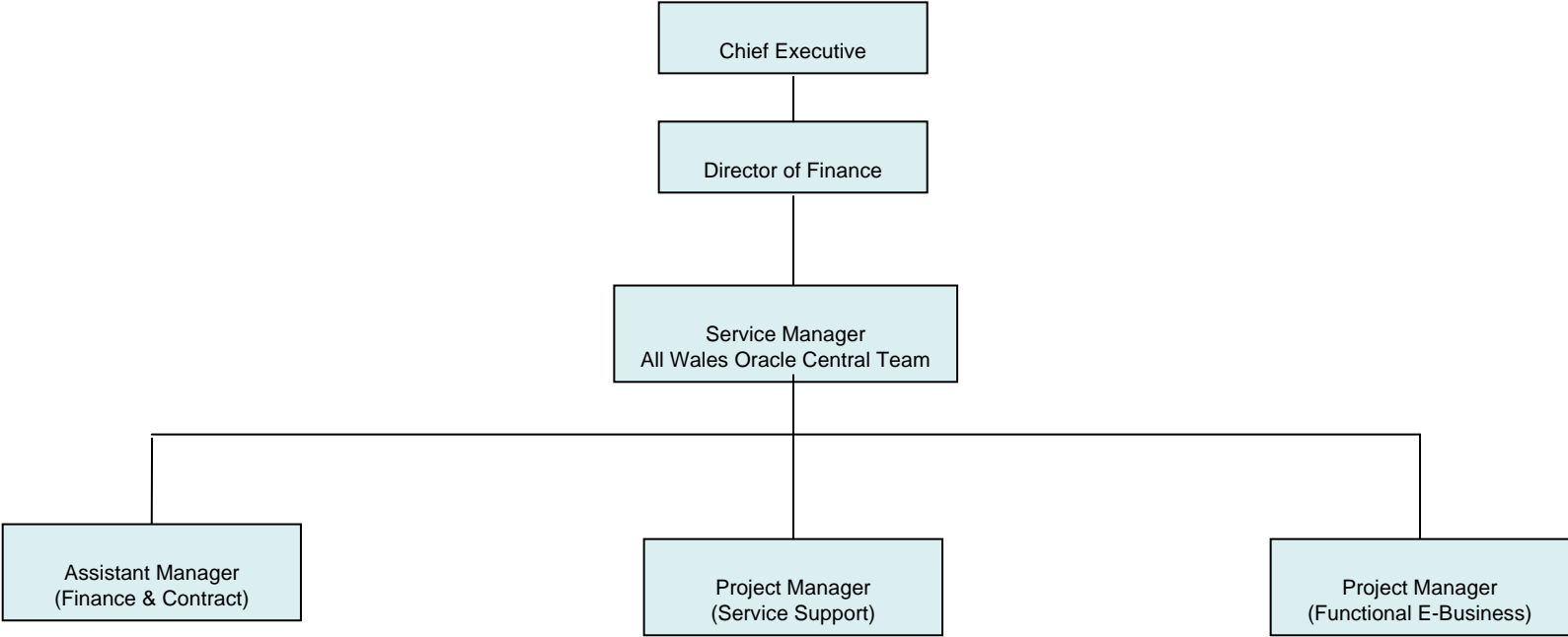
**CARDIFF AND VALE UNIVERSITY HEALTH BOARD  
PRIMARY, COMMUNITY & INTERMEDIATE CARE DIVISION**

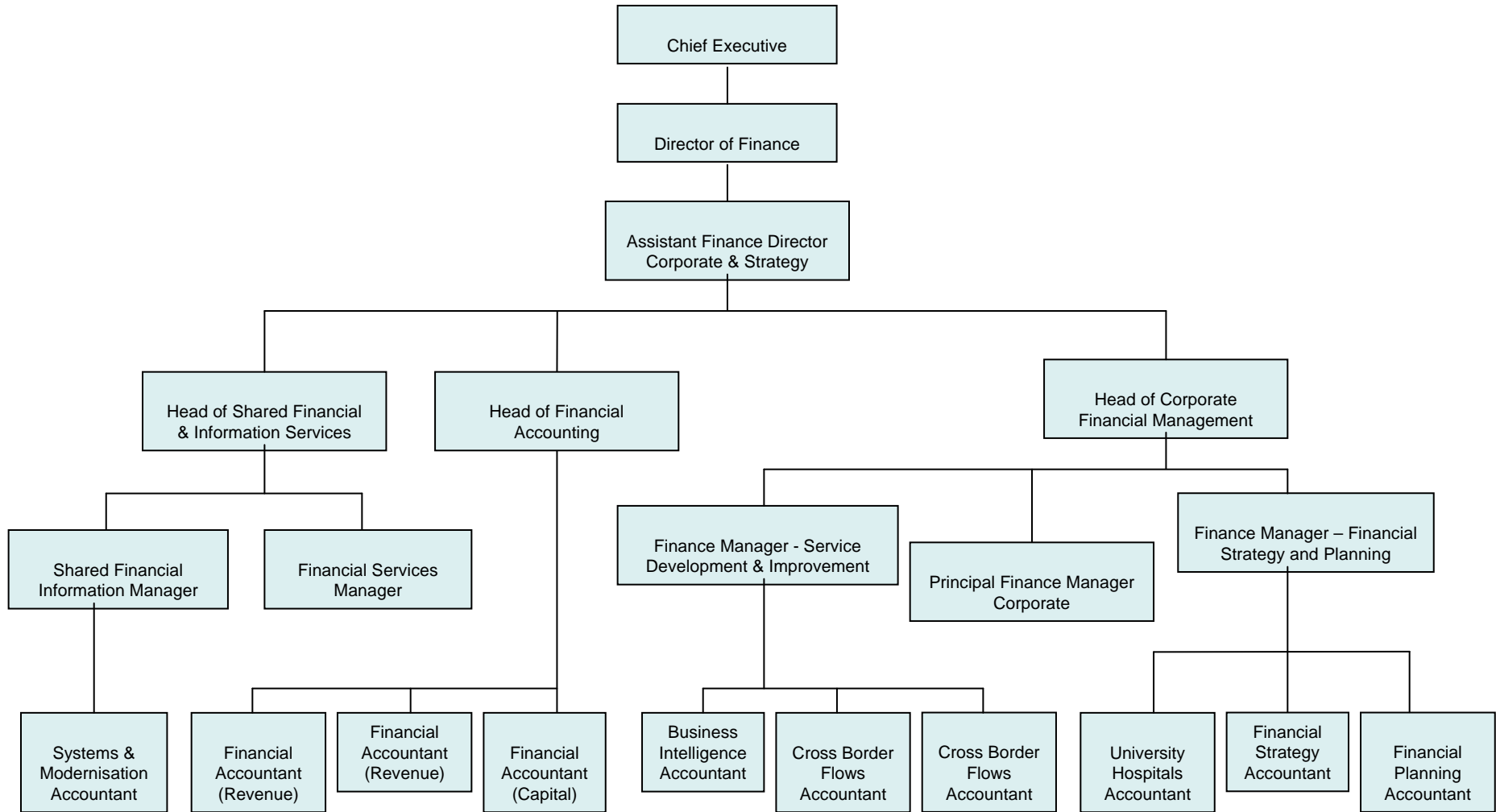


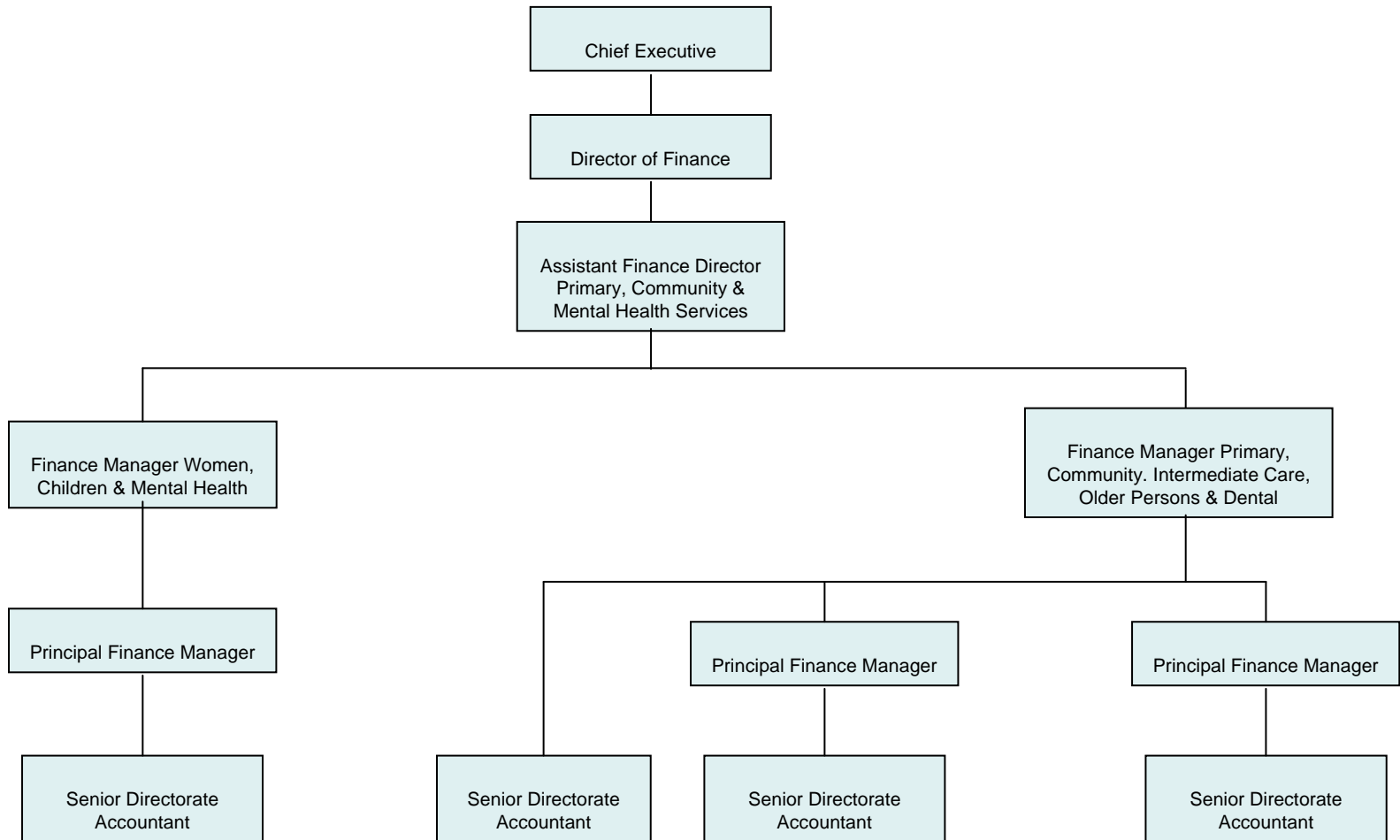


# FINANCE







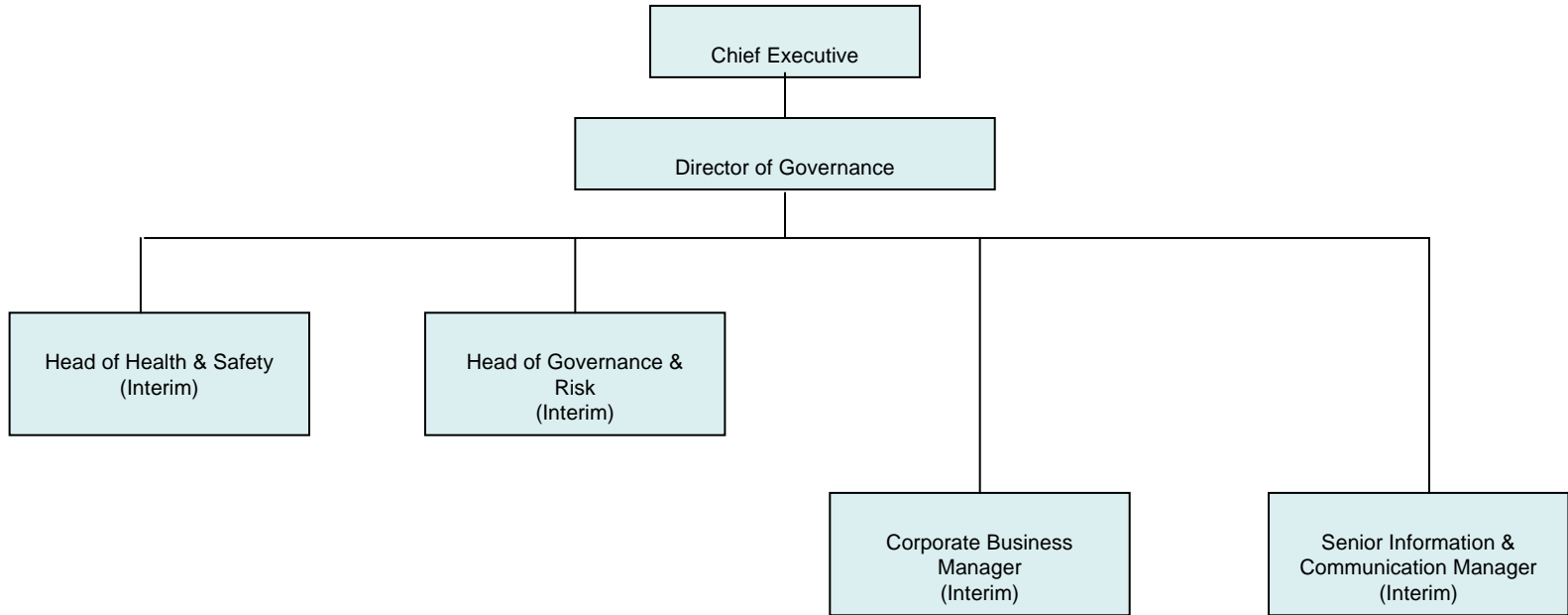




GIG  
CYMRU  
NHS  
WALES

Bwrdd Iechyd Prifysgol  
Caerdydd a'r Fro  
Cardiff and Vale  
University Health Board

# GOVERNANCE

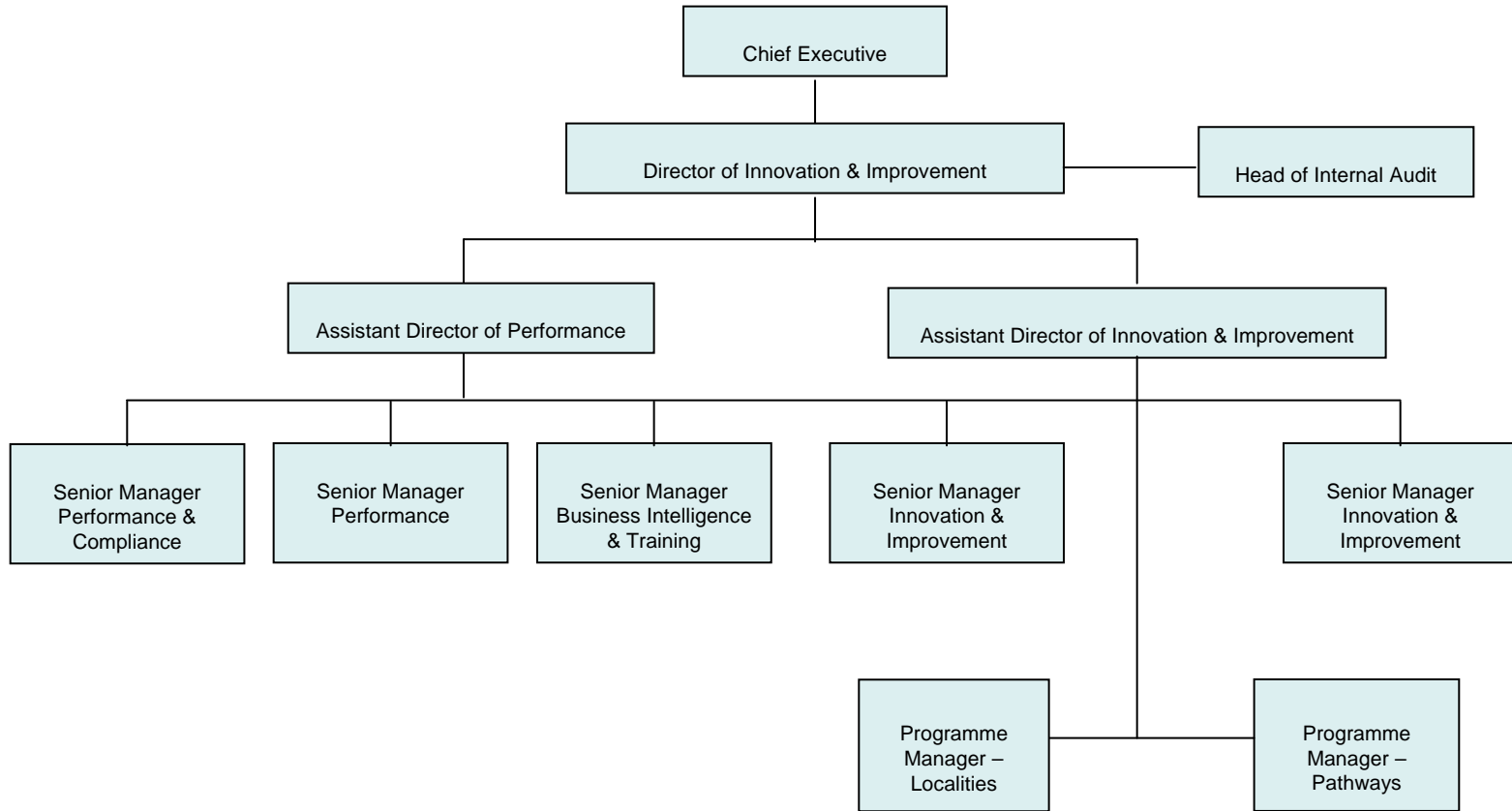




GIG  
CYMRU  
NHS  
WALES

Bwrdd Iechyd Prifysgol  
Caerdydd a'r Fro  
Cardiff and Vale  
University Health Board

# INNOVATION & IMPROVEMENT

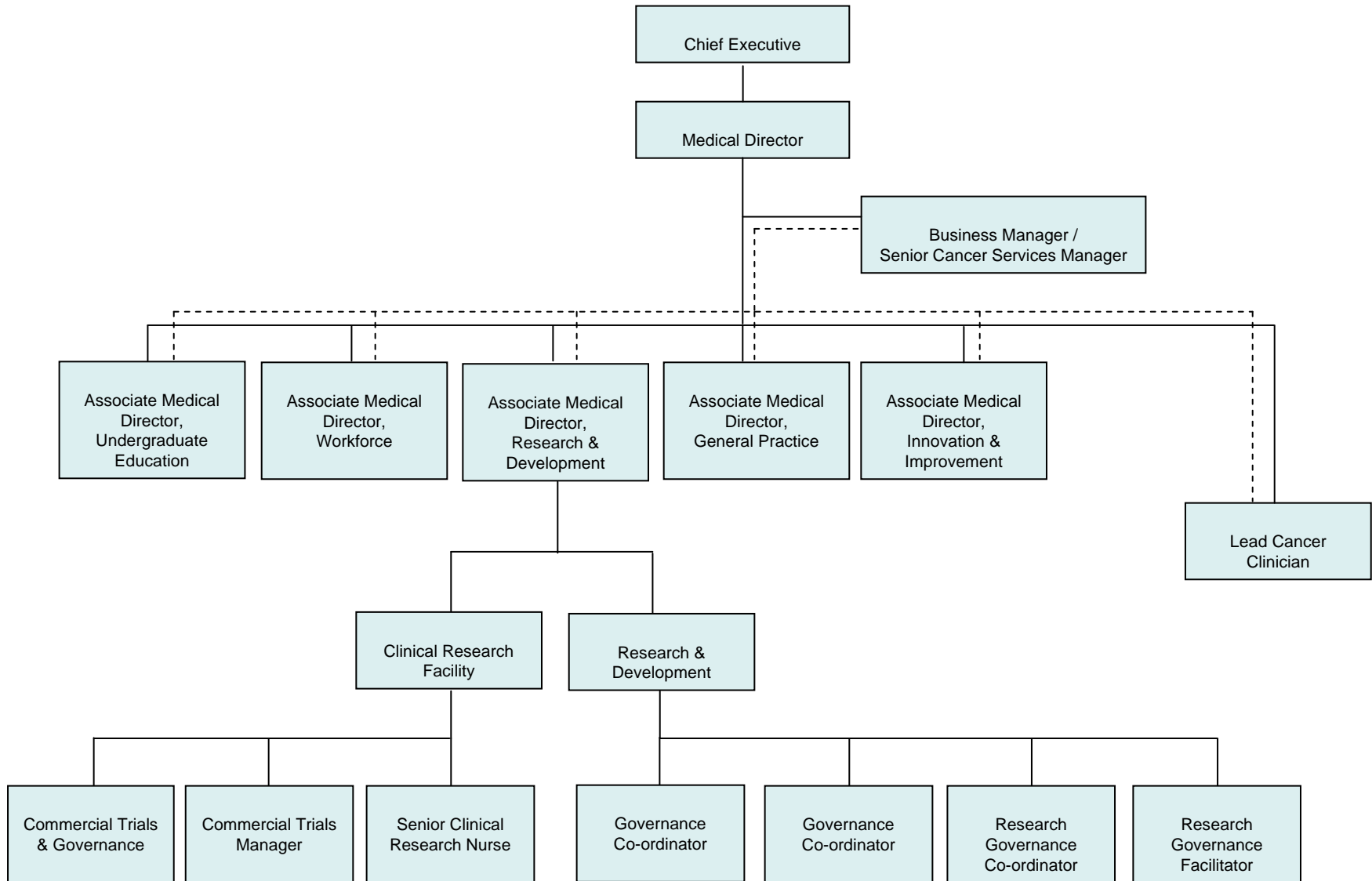




GIG  
CYMRU  
NHS  
WALES

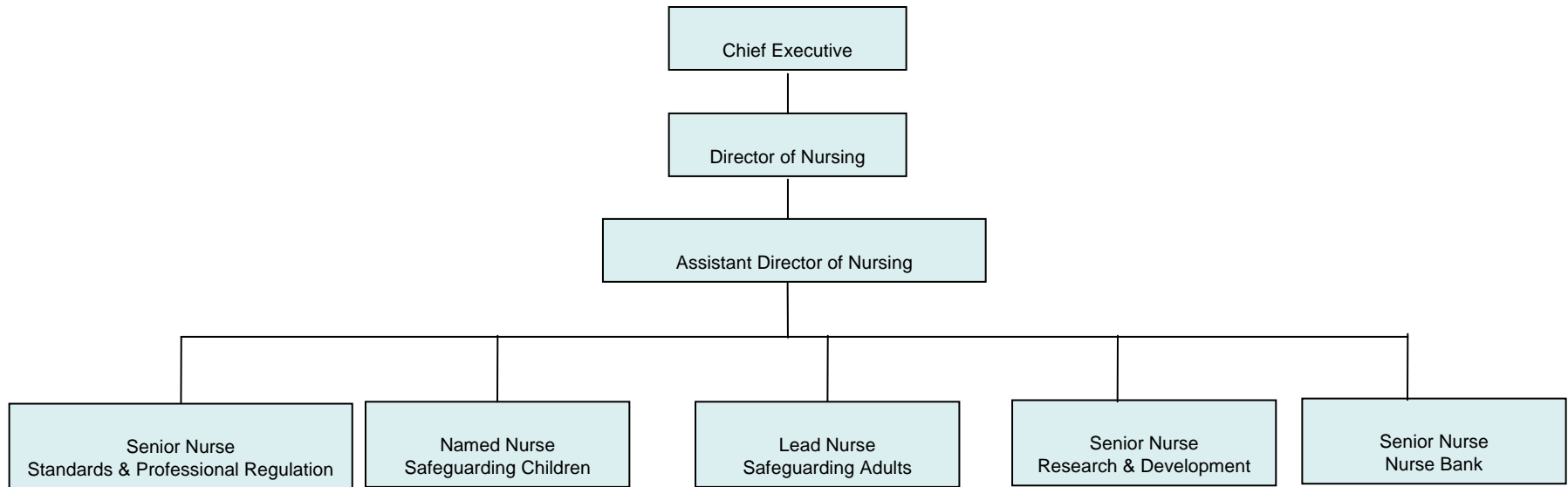
Bwrdd Iechyd Prifysgol  
Caerdydd a'r Fro  
Cardiff and Vale  
University Health Board

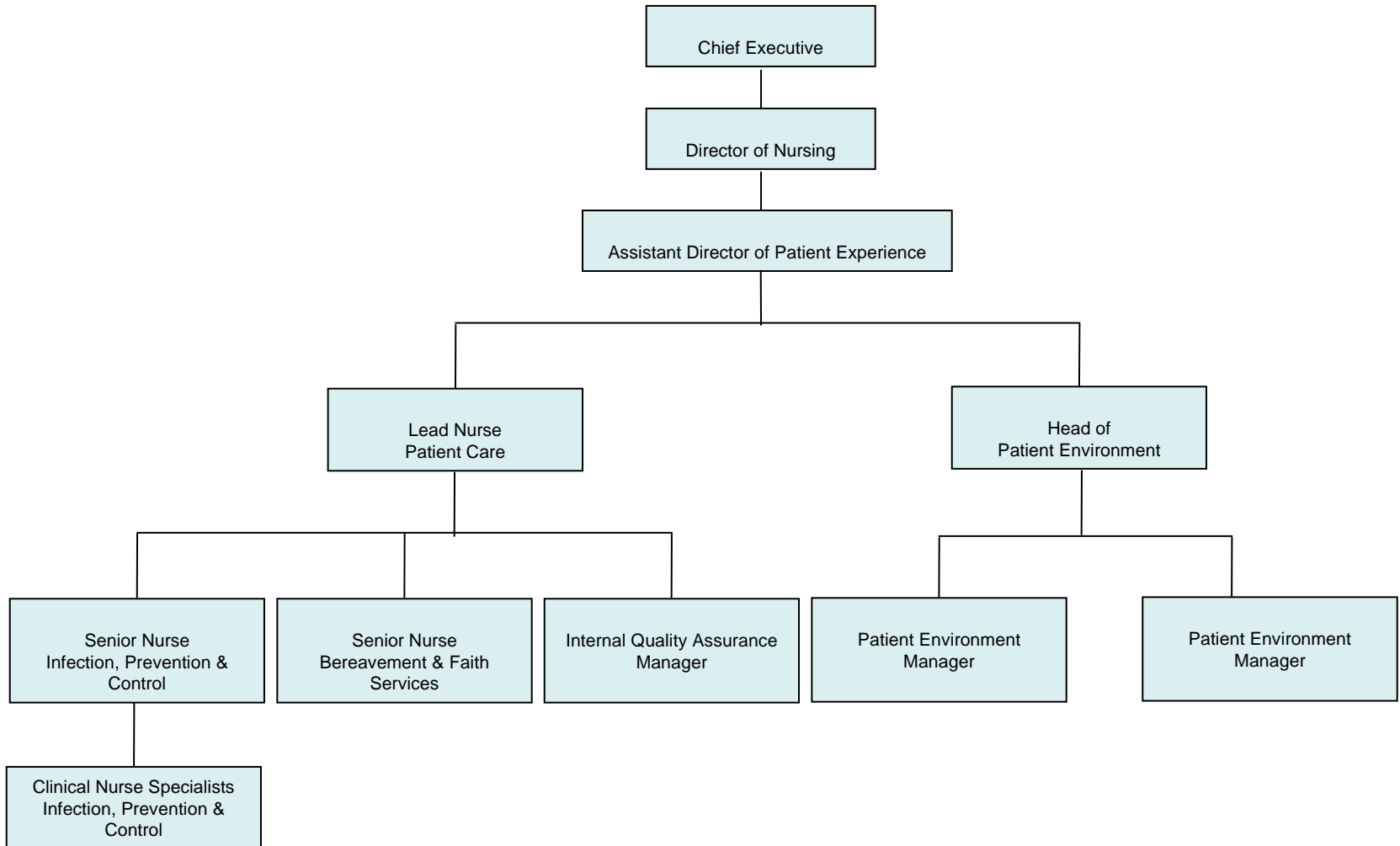
# MEDICAL DIRECTORS OFFICE

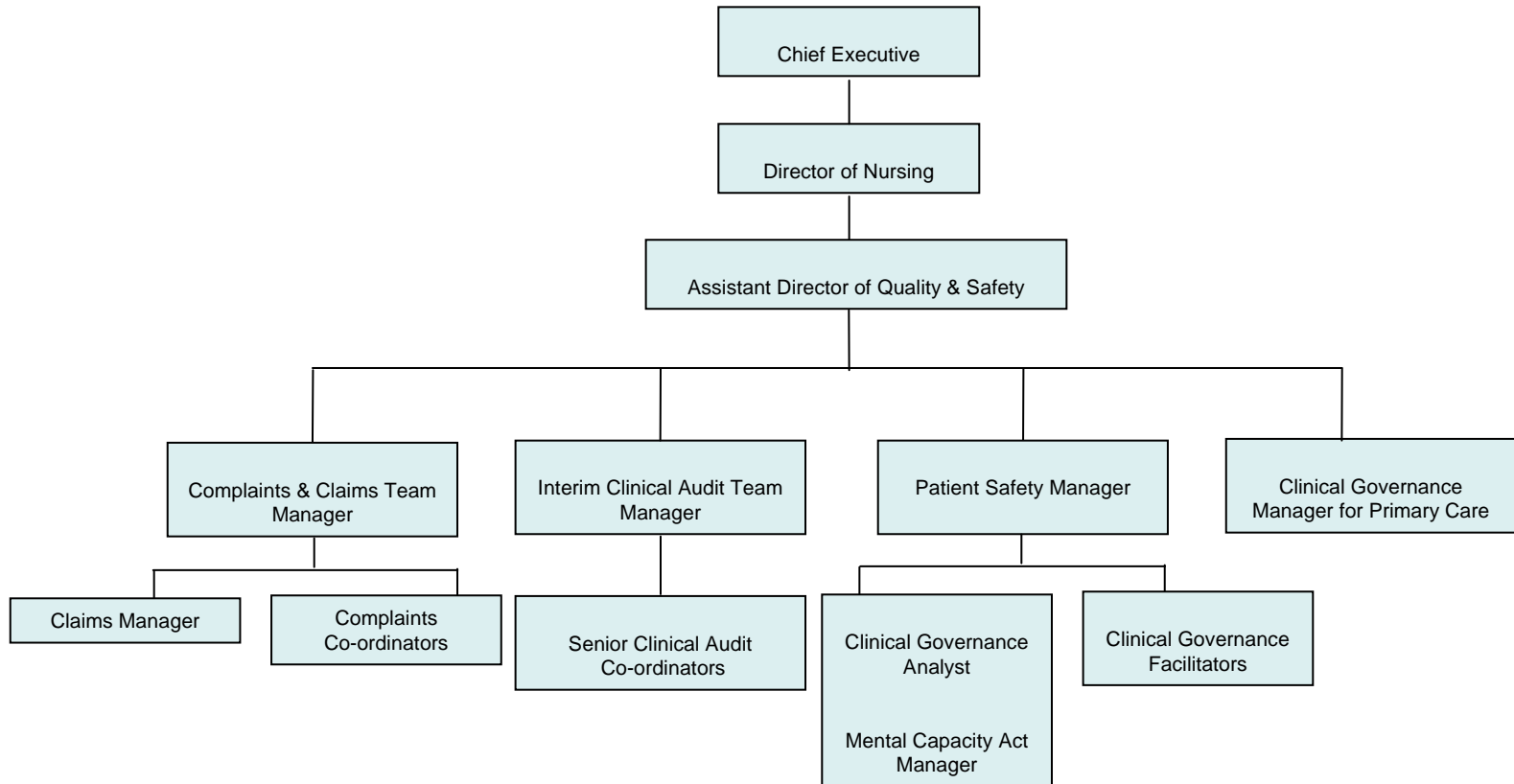




# NURSING





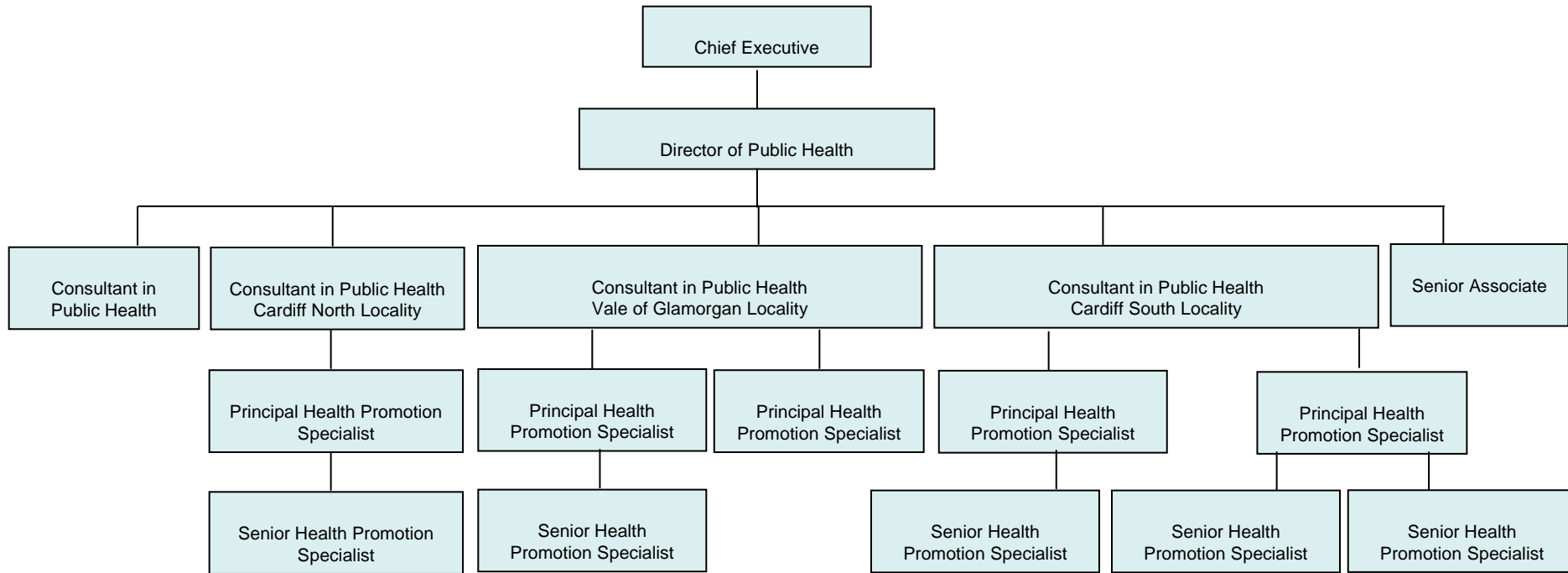




GIG  
CYMRU  
NHS  
WALES

Bwrdd Iechyd Prifysgol  
Caerdydd a'r Fro  
Cardiff and Vale  
University Health Board

# PUBLIC HEALTH

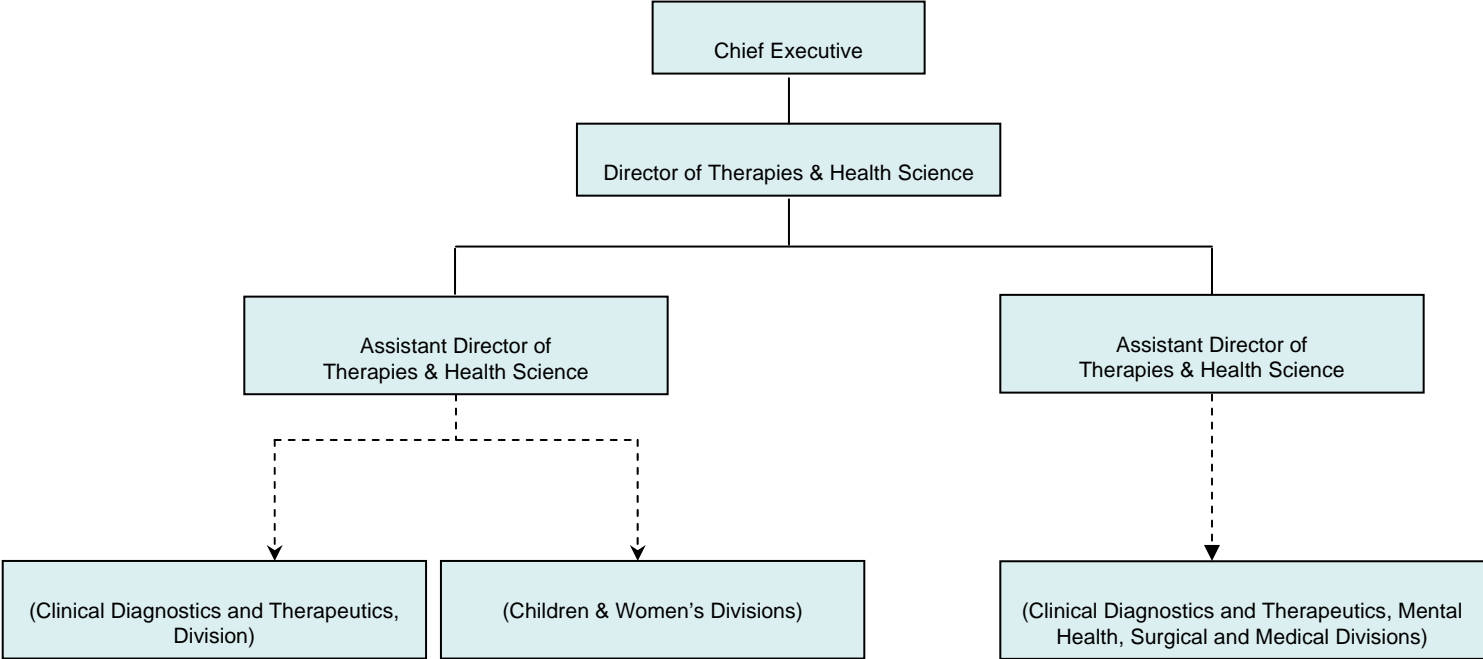




GIG  
CYMRU  
NHS  
WALES

Bwrdd Iechyd Prifysgol  
Caerdydd a'r Fro  
Cardiff and Vale  
University Health Board

# THERAPIES & HEALTH SCIENCE





GIG  
CYMRU  
NHS  
WALES

Bwrdd Iechyd Prifysgol  
Caerdydd a'r Fro  
Cardiff and Vale  
University Health Board

# WORKFORCE & OD

