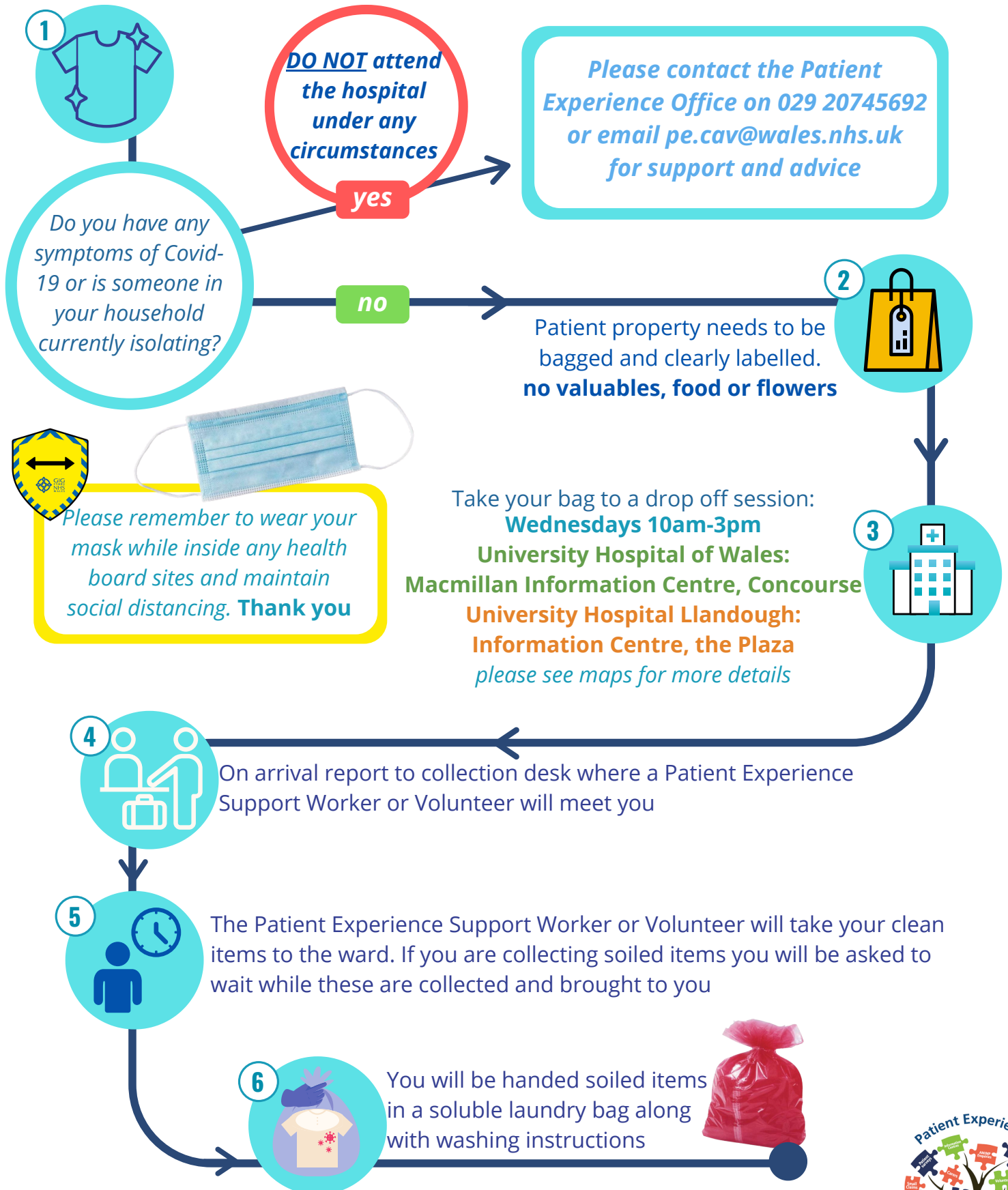




Patient Clothing & Toiletries

Family, Friend & Carer Guidance

If your family or friend requires essential items of clothing and/or toiletries please follow this process



Please remember to wear your mask while inside any health board sites and maintain social distancing. **Thank you**



Take your bag to a drop off session:
Wednesdays 10am-3pm
University Hospital of Wales: Macmillan Information Centre, Concourse
University Hospital Llandough: Information Centre, the Plaza
please see maps for more details