

Caring for people,
keeping people well,
teaching people to care



A Guide for Referrers

Community Dental Service Cardiff & Vale University Health
Board

Providing Care for those with Special Care Dental Needs

Produced by the Cardiff and Vale Community Dental Service following guidance
from the South East Wales Managed Clinical Network
for Special Care Dentistry



GIG
CYMRU
NHS
WALES

Bwrdd Iechyd Prifysgol
Caerdydd a'r Fro
Cardiff and Vale
University Health Board

Introduction

Cardiff and Vale UHB provides Community Dental Services to the residents of the Cardiff and Vale and Cwm Taf University Health Board areas.

We have more than 18 locations across both UHBs.

We offer dental care to those with additional needs and provide a safety net service in a variety of settings - including clinics and health centres, mobile dental units, patients' homes, nursing homes, residential homes and secure units.

Our multiple fixed clinics across Cardiff & Vale and Cwm Taf are accessible to patients with mobility problems and some of our larger facilities are equipped with hoists.

Accessible transport is available to some CDS clinics and hospitals in the Cardiff & Vale area and all clinics and hospitals in Cwm Taf.

Dentists and the dental teams working in these facilities are experienced and skilled in caring for patients with special care dental needs.

We also participate in the Welsh Government initiatives, aimed at reducing the incidence of dental disease: - Designed to Smile and Improving Oral Health for Older People Living in Care Homes in Wales.

The managed clinical network is a consortium of professionals from dental service providers across the South East Wales area, whose aim is to ensure that the care available to those with additional needs is equitable across the area, and meets the clients oral health needs appropriately and efficiently.

What we offer

- Central referral system – single point of contact
- Routine dental care for people with additional needs in clinics
- A comprehensive domiciliary service
- Care provided on mobile dental units
- A dental service for the homeless population in Cardiff
- Inhalation and intravenous sedation services are available in some clinics for special care patients
- Dental care to prisoners in HMP Cardiff
- Advice on oral care and dental hygiene
- Emergency dental care for special care patients
- Bariatric care
- Referrals for General Anaesthesia for special care patients

These services are delivered by a multi skilled, experienced and caring Special Care Dentistry team.

Special Care Dentistry Referrals to the Community Dental Service

Referrals are accepted based on the criteria:

Learning disability	01	Patients whose cognitive abilities are such that they are unable to manage their own oral care, particularly those who need carers to support their daily activities, including dental visits
Mental health problems	02	Patients with diagnosed mental illness who need additional skills and facilities to manage their oral care
Physical disabilities and access issues	03	Patients whose mobility / physical disability requires specialist facilities and / or skills to manage their oral care. i.e., hoists, recliners to facilitate transfer or access to patients' mouths
Complex medical needs	04	Complex medical conditions which affect their oral health and / or dental treatment, and require liaison with medical consultants
Anxiety and phobia*	05	Patients for whom there is evidence that they have dental phobia and / or anxiety which affects their ability to receive dental treatment in GDS i.e., require sedation (*MDAS score)
Cognitive impairments	06	Patients with cognitive impairments i.e., Brain Injury, Dementia
And also:		
Bariatric patients	07	Patients who exceed the weight limit of dental chairs
Vulnerable groups	08	Homeless people / substance misusers who are unable to access GDS
Frail older people	09	Older people who because of their frailty and complex medical / social needs are unable to access care in the GDS

We accept referrals from all health professionals, carers, social services / local authority staff, patients themselves and their families. All referrals will be triaged, and directed to the most appropriate person and location to ensure the care provided is as safe, appropriate and efficient as it can be.

The referral form is available on the Cardiff & Vale UHB community dental service website and may be freely copied.

Further information can be obtained from the following centres:

For patients living in the Cardiff and Vale:

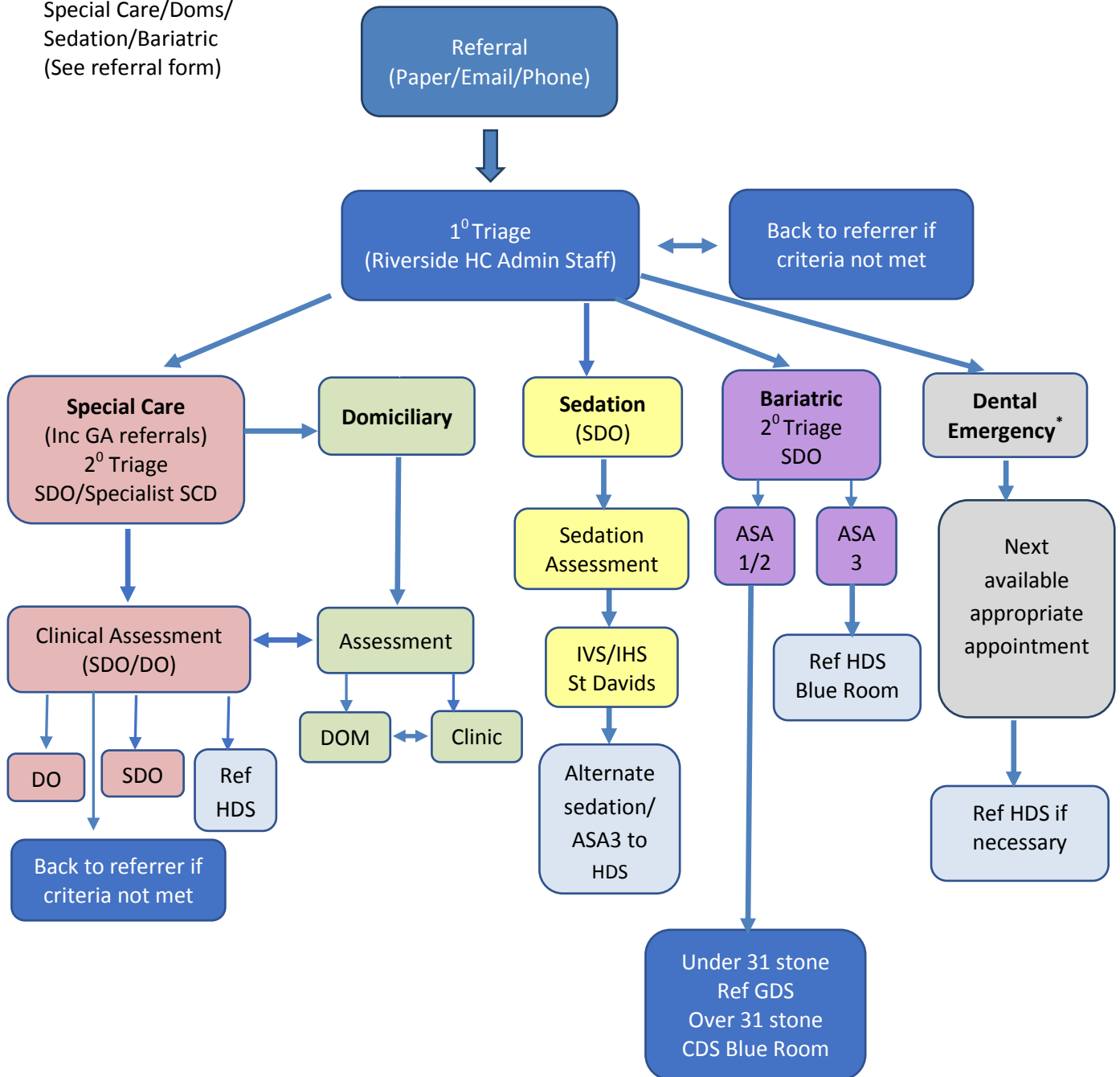
Community Dental Service
Dental Department
Riverside Health Centre
Wellington Street
Canton, Cardiff
CF11 9SH
Tel: 02920 190175

Emergency Dental Care/Advice on accessing NHS dentists in Cardiff and Vale, contact:

02920 444500 - Dental Help Line 24 hours a day 7 days a week

Flow Chart for Special Care Dentistry Referrals Cardiff and Vale (C&V)

***Criteria for CDS:**
Special Care/Doms/
Sedation/Bariatric
(See referral form)



Dental emergency:

- Dental Pain not relieved by analgesics or affecting behaviour (Learning Disability/Mental Health)
- Facial swelling
- Dental trauma

Mouth care advice for health care professionals

Care of the mouth is very important. Please advise your patients on the following:

- Attend a dentist regularly, how often will depend on certain risk factors. This would need to be discussed with a dentist.
- A healthy balanced diet is very important, with sugar reduced to mealtimes, ensuring between meals snacks and drinks are sugar free.
- Good oral hygiene is important - teeth and gums should be brushed twice a day. Dentists and hygienists can show how best to clean teeth and gums.
- Denture wearers and those without their own teeth still need to visit a dentist. Dentists will not only check teeth, but also check the mouth is healthy, and can identify diseases early to make treatment more successful.
- Smoking and drinking alcohol significantly increases the risk of mouth diseases, including mouth cancers. A dentist will be able to discuss this.

More advice is available on the designed to Smile website:

www.designedtosmile.co.uk

*Modified Dental Anxiety Score

[Only used to assess special care patients requiring sedation/GA]

1. If you went to the dentist for treatment tomorrow, how would you feel?

Not anxious Slightly Anxious Fairly Anxious Very anxious Extremely anxious

2. If you were sitting in the waiting room, waiting for dental treatment, how would you feel?

Not anxious Slightly Anxious Fairly Anxious Very anxious Extremely anxious

3. If you were about to have a tooth drilled, how would you feel?

Not anxious Slightly Anxious Fairly Anxious Very anxious Extremely anxious

4. If you were about to have your teeth scaled and polished, how would you feel?

Not anxious Slightly Anxious Fairly Anxious Very anxious Extremely anxious

5. If you were about to have local anaesthetic injection in your gum, above an upper back tooth, how would you feel?

Not anxious Slightly Anxious Fairly Anxious Very anxious Extremely anxious

Score (Maximum 25):

Not anxious=1 Slightly Anxious=2 Fairly Anxious=3 Very anxious=4
Extremely anxious=5 **MDAS > 19 indicates severe dental anxiety**