





# Special Digital & Health Intelligence Committee

09 July 2020, 09:30 to 12:00  
Via Skype

## Agenda

1. **Welcome & Introductions** Eileen Brandreth
- 1.1. **Apologies for Absence** Eileen Brandreth
- 1.2. **Declarations of Interest** Eileen Brandreth
- 1.3. **Minutes of the Committee Meeting held on 4th February 2020** Decision  
Eileen Brandreth
2. **Items for Review & Assurance**
- 2.1. **COVID-19 Response** Presentation  
David Thomas
  -  2.1 Digital Showcase The Digital COVID JourneyV7 (002).pdf (1 pages)
- 2.2. **Digital Transformation Story / Lessons Learned** Presentation  
David Thomas
  -  2.2 CAV Covid-19 Digital Response dt.pdf (8 pages)
3. **Items for Approval / Ratification**
- 3.1. **Digital Strategy - Final Version** David Thomas
  -  3.1 DHIC Dig Strategy covering paper dt.pdf (5 pages)
  -  3.1 Digital Strategy.pdf (35 pages)
4. **Items to bring to the attention of the Board / Committees** Eileen Brandreth
5. **Any Other Business** Eileen Brandreth
6. **Review of the Meeting** Eileen Brandreth
7. **Date & Time of Next Meeting** Eileen Brandreth
  - Thursday 8th October 2020
  - 9:30am - 12:30pm
  - Cwm George - Woodland House

Tolley, Laura  
06/30/2020 09:41:52

# Digital COVID Journey

Setting the Digital Landscape for Health



## Dragons Heart Hospital

## Accelerated Rollout of National Products

## Empowering Staff to Work Digitally

## Supporting Patient Flow

## Virtual Meetings and Digital Consultations

## Connecting Patients and Their Families

- 1500 bed hospital
- Pervasive Digital infrastructure installed
- Access to all UHB systems
- 1000s of PCs, monitors, Printers, COWs, POCT etc
- Network installed
- Telecomms and Bleep systems installed
- Bespoke system and BI developments

- **MTed** further rollout to **DHH**
- PACS Mobility rolled out
- COVID testing on LIMS
- Rollout and Deployment of Community Electronic testing centres
- Commencement of Staff Antibody testing
- Deployment and rollout of National Track and Trace system.
- Additional **WCP** functionality
- Increased use of WCP for OP Virtual Clinics

- Total mobile device deployment increased to over 6000
- Laptop access via physical tokens
- Laptop access via soft tokens
- Laptop access via Meraki remote routers
- Access via Blackberry for Phones and Tablets
- **1400** Headsets provided
- **1200** Webcams installed

- Developed COVID dashboard
- Electronic COVID SITREP report
- Live bed state developed to provide live reflection of bed occupancy and COVID pathways

- Microsoft Teams deployed within the UHB
- **Attend Anywhere:**
- 56 GP practices live
- 16 Secondary Care specialties live
- **32 preparing to go live**
- **375 consultations undertaken in secondary care**
- Consultant Connect implemented
- Hospify platform used ad hoc

- **430** Tablets deployed to wards for patients to **keep in touch** with relatives and friends

# CARDIFF AND VALE COVID 19 DIGITAL RESPONSE

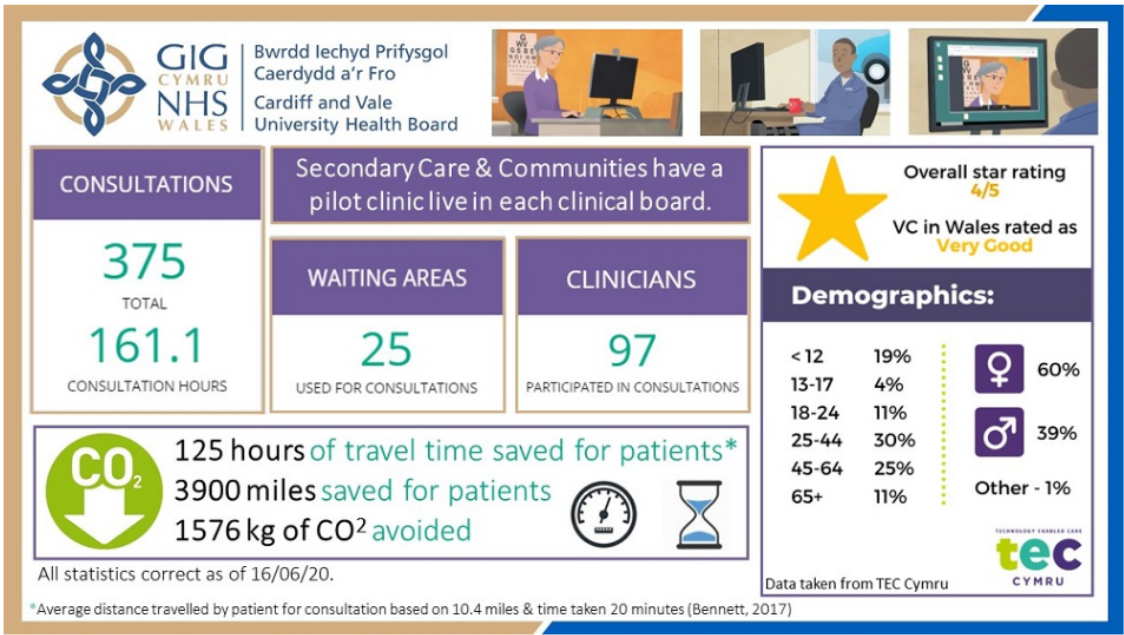
**Objective:** To highlight the Cardiff and Vale digital COVID response and achievements.

**Narrative:** New ways of working for the NHS and social care with digital solutions that have been accelerated because of COVID that are benefitting people now, and allowing the NHS to stay open for business. These are long term changes that will continue to be used and developed beyond COVID transforming the way services have traditionally been delivered.

**Regional/local programmes:** Digital and Health Intelligence department, Cardiff and Vale University health Board

Theme	Activity	Scale /Roll-out
Remote working solutions	NHS Video consulting service	Primary care <ul style="list-style-type: none"><li>56 of our 62 CaV practices that wish to make use of the tool have gone live.</li></ul> Secondary care – <ul style="list-style-type: none"><li>16 live specialities</li><li>18 within the design or development stage in readiness for go live</li><li>14 other specialty expressions of interest.</li><li>6 PAS identified systems across the UHB (PARIS, BEST, PMS, SHIRE, MILLCARE COHORT) are in the process of being amended to enable; booking, patient reminding and recording of video consultations</li><li>Progress as at 22 June:</li></ul>

Tolley, Laura  
06/30/2020 09:41:52

Theme	Activity	Scale /Roll-out
		 <p>The infographic provides a comprehensive overview of video consultation (VC) services. It highlights the following key metrics:</p> <ul style="list-style-type: none"> <li><b>CONSULTATIONS:</b> 375 TOTAL, 161.1 CONSULTATION HOURS</li> <li><b>WAITING AREAS:</b> 25 USED FOR CONSULTATIONS</li> <li><b>CLINICIANS:</b> 97 PARTICIPATED IN CONSULTATIONS</li> <li><b>Overall star rating:</b> 4/5</li> <li><b>VC in Wales rated as:</b> Very Good</li> <li><b>Demographics:</b> <ul style="list-style-type: none"> <li>&lt; 12: 19%</li> <li>13-17: 4%</li> <li>18-24: 11%</li> <li>25-44: 30%</li> <li>45-64: 25%</li> <li>65+: 11%</li> <li>Gender: 60% Female, 39% Male, Other - 1%</li> </ul> </li> <li><b>Environmental Impact:</b> 125 hours of travel time saved for patients*, 3900 miles saved for patients, 1576 kg of CO<sub>2</sub> avoided</li> </ul> <p>All statistics correct as of 16/06/20.</p> <p>*Average distance travelled by patient for consultation based on 10.4 miles &amp; time taken 20 minutes (Bennett, 2017)</p>
		<p>The UHB patient facing website for Attend Anywhere is now live, with enablement of links to waiting rooms available soon.</p> <p>A standard operational procedures group is working up UHB wide standard practices and communications for embedding across UHB services and PAS systems.</p> <p>The project has undertaken an evaluation of ‘pilot’ shared across Wales, and published both a uHB wide ‘configuration guide’ and ‘Implementation guide’ (currently being used to inform implementations across Wales). The project will now look to finalise corporate readiness for video consults and streamline patient communications in regards to Video consults..</p> <p>AccuRx is also available to UHB staff, and may be used in situations that UHB supported tools may not be available or suitable.</p> <p>Zoom has also been used ad-hoc across the health board.</p> <p>The all Wales Adult Cystic Fibrosis Team has used Zoom for a “Virtual Leisure Centre” which delivers structured exercise classes with two way feedback and for weekly virtual support meetings. Feedback from patients has been very positive and the staff found it extremely rewarding to bring CF patients together for an informative and supportive chat to support their patients during the last few weeks. This has provided a useful tool for therapists and the team are working closely with CaV Digital and a national working group to consider sustainable platform options for ongoing group exercise and therapy sessions.</p>

Tolley, Laura  
06/30/2020 09:41:52

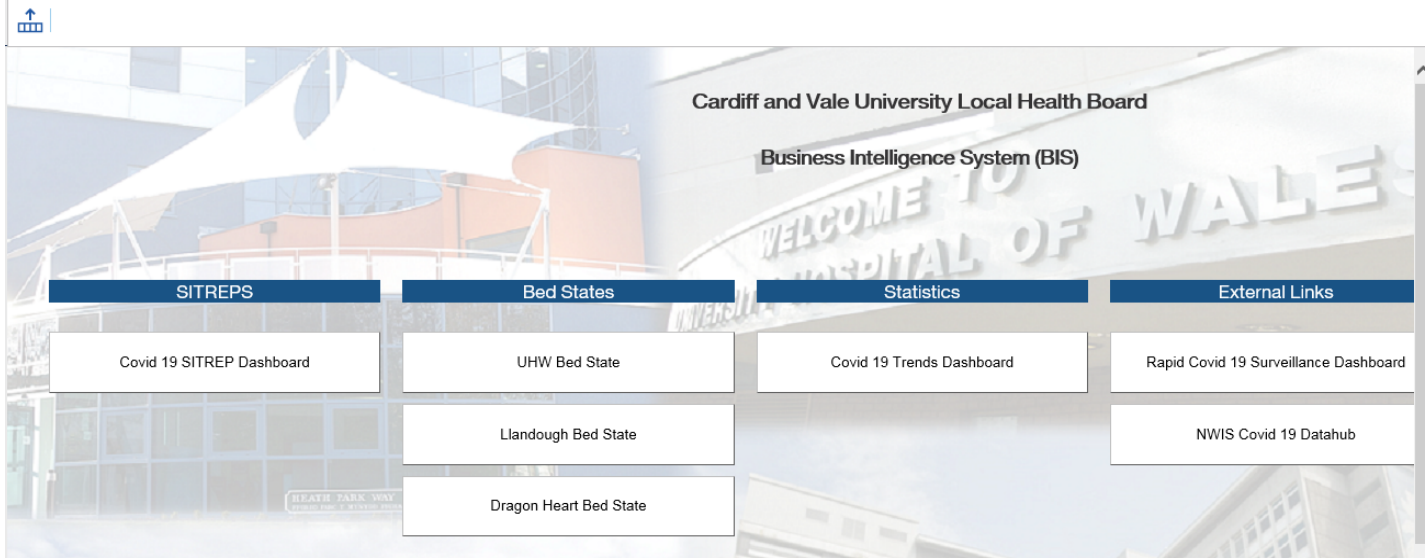
Theme	Activity	Scale /Roll-out
Remote working solutions	Consultant Connect	<p>Consultant Connect went live for GP surgeries across CAV on Monday 1<sup>st</sup> June with 8 local specialties offering advice; Acute Medicine, Dermatology, Emergency Medicine, Care of the Elderly, CAMHS crisis team, Respiratory Medicine, Rheumatology and Sexual Health.</p> <p>GPs can also receive advice from the National Consultant Network for the following 5 specialties; Cardiology, Diabetes, Endocrinology, Gastroenterology and Urology.</p> <p>Consultant Connect has also been made available to WAST with access to existing advice lines and the CAV Acute Medicine team.</p> <p>Planning for further roll out is now underway with a further 8 specialties expressing an interest.</p> <p>The Hospify platform allows for safe/secure/compliant communications between NHS staff about patients and is used adhoc across the health board.</p>
Remote working solutions	Microsoft Teams rolled out to NHS Wales	<p>The digital team has at pace, technically enabled the use of MSTeams within the HB.</p> <p>Local set up guides and videos established and circulated</p> <p>A Teams page on CAV-digital website page has been established with content in readiness for roll out.</p> <p>Teams was initially rolled out to c250 staff (D&amp;HI, Junior doctors and to individual requests), during April. Feedback has been collated to inform wider implementation.</p> <p>Final testing was completed and the Teams application rolled out to all staff.</p> <p>Enabling work has now commenced for meetings to be scheduled within mail box calendars, similar to the skype facility.</p> <p>Policies to allow the use of Teams and other future O365 products on personal Windows devices will be rolled out imminently. Similar work allowing usage on MacOS devices is in progress.</p> <p>The D&amp;HI department is supporting clinical boards to establish champions within each area, therefore creating a local hub for roll out, learning and feedback. A group is also being established to share examples of how others have used Teams to help inform specialties on the opportunities this solution and others e.g. Attend Anywhere, present, in terms of how we can transform and improve services.</p>

Tolley, Laura  
06/30/2020 09:41:52

Theme	Activity	Scale /Roll-out
		Monthly board meetings have been established to support full Office 365 implementation and the health board is collaborating with Trustmarque staff to provide business change advice and readiness support.
<b>Remote working solutions</b>	Remotely capturing clinical data via the locally built COM II system.	<p>The COMII solution in place at CAV UHB addresses the requirements of the electronic outpatient record in a fully integrated manner that best suits the Health Board's needs without compromising the ability of clinicians across the rest of Wales to see the various outcome reports. COMII is an outpatient module designed to capture all information associated with an outpatient attendance event, including virtual/telephone clinics. It allows users to view all clinics appointments and associated documents as well as the ability to add information that can be relayed to others. It can remove the necessity of paper based recording in outpatient environment.</p> <p>In order to address the urgent outpatient needs associated with the pandemic clinicians are now able to use COMII through remote working methodologies.</p> <p>Remote access to COMII also gives clinicians more flexibility to monitor their <u>inpatients</u>. A digitised continuation/summary sheet has been developed enabling clinical notes to be written digitally, stored and also printed within Health Record. This can improve working efficiency rather than swapping between systems and can avoid the need for staff to unnecessarily handle shared paper sheets during the pandemic. This is as an interim solution for casenotes pending full electronic patient record.</p> <p>The COMII application has now been rolled out to nearly all clinicians (635 users)</p>
<b>Devices</b>	Devices to hospitals	<p>D&amp;HI have received 430 devices (300 of which have been funded by Welsh Government) which are being used to connect and entertain ward based patients, to enable communication with families, carers and friends whilst we are unable to accommodate visitors.</p> <p>The devices are being set up to ensure websites and applications can be accessed safely whilst also ensuring that no personal electronic details can be transferred between patients as devices are re-loaned</p> <p>350 are now built and being rolled out via the Patient Experience team, with 50 more per week being made available.</p> <p>Additional procurement and allocation of devices including laptops, soft/RDS tokens, licenses, monitors and headsets to support home working and video consultations brings the total mobile deployment in Cardiff and Vale to in excess of 6000.</p>
<b>Infrastructure and data sharing</b>	Upgraded network bandwidth and infrastructure	CAV UHB has built and distributed an additional c1400 laptops and 900 meraki boxes over the past few weeks plus c850 Blackberry mobile users enabling more than c2000 additional staff to work remotely, since the end of March. They did this at the same time as we were building and doing the digital fit-out of the Dragons Heart Hospital

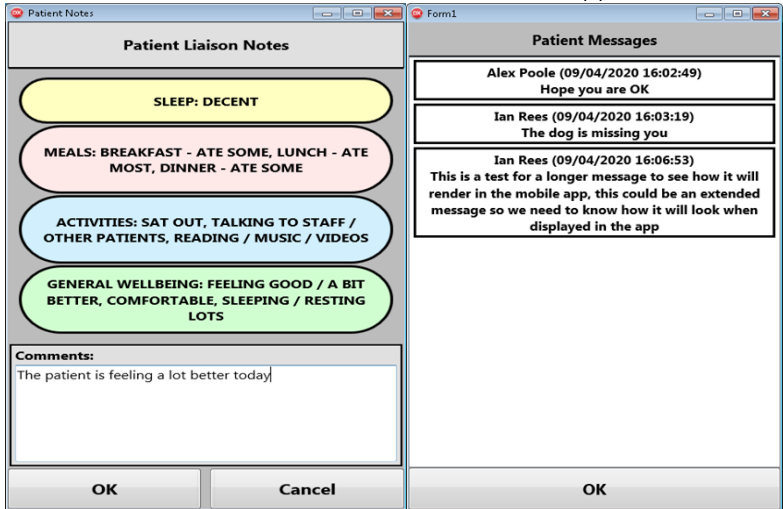
Tolley, Laura  
06/30/2020 09:41:53

Theme	Activity	Scale /Roll-out
		<p>Solutions include Apps, Laptops, network devices and leverage the investments we had already made in our existing estate delivering even better value from our asset base.</p> <p>To enable the significant increase in homeworking across CAV UHB the circuits supporting home users were upgraded ten-fold We also introduced a new circuit to increase the capacity of CAV free WiFi, delivering enhanced performance to patients and clinicians alike.</p>
<b>Infrastructure and data sharing</b>	Enabling new sites	<p>D&amp;HI further leveraged its digital estate by extending CAV UHB network, infrastructure and applications to <b>Dragons Heart Hospital</b> and within weeks were supporting an additional 1500 bed site.</p> <p>c100km of fibre and cable was installed and we built both fixed and wireless network supporting the whole hospital site.</p> <p>We also built and installed 100's of devices including radio aerials to support the bleep system, PCs, phones and printers for nurse stations, special network ports to support radiology imaging equipment, patch cables for POCT (point of care testing) equipment and clinical labs were installed</p> <p>The new wards and beds were set up to access all UHB systems in the same way as staff can access these at any other UHB site, whilst digital equipment and connectivity was also established in multi-disciplinary, therapy and rest rooms.</p> <p>A number of enhancements were made to the patient management system and ward clinical workstation to enable its use at this new site. For example, the bed management structure was updated to include the new 4 wards with the associated schematics built. This new site functionality was also enabled within the ward clinical workstation and this included the additional functionality associated with Covid-19 notes and comments. The Dragon's Heart Hospital wards are also enabled on the Medicines, Transcribing and e-discharge application.</p> <p>The digital team has also enabled access to welsh clinical portal and the Cardiff clinical portal from the <b>Spire hospital sites</b>, for those CAV UHB patients being treated there.</p> <p>In addition, colleagues have been supporting Primary, Community and Intermediate care (PCIC) board to roll out welsh clinical portal and Digital Infrastructure to three Cardiff <b>Community testing units</b> at Whitchurch hospital, the Splott Star Centre, and the Cardiff City Stadium.</p>
<b>Infrastructure and data sharing</b>	Track Trace Protect Project	<p>The Digital Team have in conjunction with the Council enabled a range of staff to take part in the Track and Trace programme by supplying remote Digital Infrastructure configured to access the newly developed and deployed National CRM system.</p>
<b>Infrastructure and data sharing</b>	Local Business intelligence warehouse	<p>There have been a number of developments within the local health intelligence warehouse to facilitate the collection, flow and sharing of Covid-19 data. In particular, a new Covid-19 dashboard has been developed to:</p>

Theme	Activity	Scale /Roll-out
	enhancements to assist with reporting of Covid-19	 <ul style="list-style-type: none"> <li>• Provide an on-line - near real time SITREP showing EU flow and where suspected and confirmed Covid-19 patients are across all sites, including those that have tested negative for the virus or have passed 14 days post testing. This includes interactive visualisations and site schematics.</li> <li>• Visualises bed states for key sites in near real time reflecting zones set-up for Covid and non-Covid pathways.</li> <li>• Trend in-hospital (Covid/Non-Covid) measures and community testing. Most recently resident testing and results are plotted on maps with the ability to play data along timelines – includes the option to look at staff and residents testing in Nursing/Care Homes. Readmissions and other length of stay analysis will be added imminently.</li> <li>• Display visualisations on the levels of Covid-19 staff testing along with the current reported sickness rates at clinical board level including test turnaround times.</li> <li>• Reports generated to track daily completion of new covid-19 deaths e-form to support accurate reporting of Covid deaths. This data is also now being brought into an overall Mortality Dashboard encompassing Covid e-forms and Universal Mortality Reviews.</li> <li>•</li> </ul>
Infrastructure and data sharing	Local enhancements to support information sharing with families.	Developments have been made to the local ward clinical workstation to enable messages to be recorded and communicated between patients and relatives and to facilitate hand over. Information is stored on the well-being of the patient and includes data items such as how well they slept, meals eaten, activities undertaken and general wellbeing. Relatives' messaging can also be recorded.

Tolley, Laura  
06/30/2020 15:41:52



Theme	Activity	Scale /Roll-out
		<p>A new app (written as part of the PMS system) has been developed to enable easy and remote recording of this WCWS wellbeing information. This information can be sent as an SMS message from within the app to identified next of kin. Messages return from relatives' can also be viewed in the app.</p>  <p>The App also has a barcode scanning functionality, to enable staff to barcode scan a patients' CRN into a scanned bed, to efficiently assist with real time bed management. Patients can also be discharged and transferred between UHB sites.</p> <p>This app is in the process of being tested before further roll out.</p>
Infrastructure and data sharing	Staff information and data sharing	An SMS facility was launched on 13 <sup>th</sup> April to inform staff tested in the community of “negative” Covid-19 results. BBC news has covered the story.
Infrastructure and data sharing	Data sharing for research	To enable rapid data analytics on treatment outcomes for Covid-19 patients and thereby contributing to the national understanding of better treatment pathways, (automated) functionality to construct and transfer pseudonymised data records for clinically led engagement between the Health Board's Immunology Department and Cardiff University, has been established.

Theme	Activity	Scale /Roll-out
Industry offers	Industry partners to provide rapid response to covid.	<p>We have a managed service contract with Dell and Trustmarque assisting with technical support and communication support for the roll out of office 365/teams.</p> <p>DHH was supported by numerous industry partners, including IKM cablers, Multitone Electronics PLC (loaned system and bleeps), Daisy corporate services, trading ltd, Virgin media, BT, along with various other companies and WRU contracted companies, all digitally enabling the site at pace.</p>

Tolley, Laura  
06/30/2020 09:41:52

<b>Report Title:</b>	<b>Digital Strategy – Final Version</b>					
<b>Meeting:</b>	<b>Digital &amp; Health Intelligence Committee</b>			<b>Meeting Date:</b>	<b>9<sup>th</sup> July 2020</b>	
<b>Status:</b>	<b>For Discussion</b>		<b>For Assurance</b>	<b>x</b>	<b>For Approval</b>	<b>For Information</b>
<b>Lead Executive:</b>	<b>Director of Digital &amp; Health Intelligence</b>					
<b>Report Author (Title):</b>	<b>Director of Digital &amp; Health Intelligence</b>					

#### **Background and current situation:**

The Digital & Health Intelligence Committee received a presentation of the draft Digital Strategy at its last meeting. Since then, the strategy has been developed further with significant input from the Chief Clinical Information Officer (CCIO), ensuring alignment with the UHB's clinical services plans.

The final version of the Digital strategy will form the basis of the UHB's IT and information plans for the next 5 years, informed by national strategy and developments as well as local plans in supporting the UHB's strategy as described in "Shaping our Future Wellbeing".

Implementation of the work programme to support the Digital Strategy will be led primarily through the Digital directorate teams working closely with Clinical Boards and their nominated clinical digital leads.

Tolley, Laura  
06/30/2020 09:41:52

**Executive Director Opinion /Key Issues to bring to the attention of the Board/ Committee:**

The Digital Strategy will commit the UHB to a direction of travel informed by clinical services and the UHB's own future plans. Delivery of the plans will require investment decisions to be made based on business cases that will describe the benefits to be derived from their implementation.

The Digital strategy is likely to continue to evolve and change as local and national initiatives become clearer and are implemented.

**Assessment and Risk Implications (Safety, Financial, Legal, Reputational etc:)**

The strategy's success will be dependent on adequate investment plans as well as an appetite to deliver transformed services, which will require cultural changes to the ways of working. This will include change management and new working practices in order to maximise the potential that digital solutions can offer.

**Recommendation:**

The Committee is asked to:

**AGREE** the Digital Strategy for the UHB for 2020-2025.

Tolley, Laura  
06/30/2020 09:41:52

<b>Shaping our Future Wellbeing Strategic Objectives</b> <i>This report should relate to at least one of the UHB's objectives, so please tick the box of the relevant objective(s) for this report</i>									
1. Reduce health inequalities		6. Have a planned care system where demand and capacity are in balance							
2. Deliver outcomes that matter to people		7. Be a great place to work and learn							
3. All take responsibility for improving our health and wellbeing		8. Work better together with partners to deliver care and support across care sectors, making best use of our people and technology	x						
4. Offer services that deliver the population health our citizens are entitled to expect	X	9. Reduce harm, waste and variation sustainably making best use of the resources available to us							
5. Have an unplanned (emergency) care system that provides the right care, in the right place, first time		10. Excel at teaching, research, innovation and improvement and provide an environment where innovation thrives							
<b>Five Ways of Working (Sustainable Development Principles) considered</b> <i>Please tick as relevant, click <a href="#">here</a> for more information</i>									
Prevention	X	Long term		Integration		Collaboration		Involvement	

Tolley, Laura  
06/30/2020 09:41:52

<b>Equality and Health Impact Assessment Completed:</b>	Yes / No / Not Applicable <i>If “yes” please provide copy of the assessment. This will be linked to the report when published.</i>
---	---

Tolley, Laura  
06/30/2020 09:41:52

Tolley, Laura  
06/30/2020 09:41:52



# Delivering Digital

Building a learning health and care system  
A Five Year Strategy

Cardiff & Vale University  
Health Board



GIG  
CYMRU  
NHS  
WALES

Bwrdd Iechyd Prifysgol  
Caerdydd a'r Fro  
Cardiff and Vale  
University Health Board

Tolley, Laura  
06/30/2020 09:41:52



- Section One
- Section Two
  - 2.1
  - 2.2
  - 2.3
- Section Three

## Overview

### Achieving the Vision

Achieving the Vision: Stuff

Achieving the Vision: Staff

Achieving the Vision: Adaptive Change

### Delivery



# Overview

Our vision,  
Our Principles



Tolley, Laura  
06/30/2020 09:41:52

# Introduction

This digital strategy is being produced to provide a clear roadmap for how digital technology will enable the transformation of clinical services described by the Cardiff & Vale University Health Board overarching strategy, 'Shaping Our Future Well-being'.

The ambition of the NHS in Wales has been set out in the Welsh government document a healthier Wales published in 2018, declaring the ambition for an integrated health and social care system which enables seamless care and the ability to promote health and well-being as close to home as possible. The document very clearly sets out the need for a modern digital infrastructure to enable this transformational change.

The strategy has been written after engagement with staff across the organisation, taking particular note of the attendees of the clinical information management and technology group, the clinical boards, the executive board and information available to us from patient feedback.

The strategy sets out a significant step change in the approach that Cardiff and Vale University health board will take towards a digital future for healthcare services.

Digital services should not be regarded as an end in themselves. The Parliamentary Review into Health and Social Care in Wales, informed by extensive public and service engagement, called for a transformation in the way we deliver services, and this has been accepted by the Welsh Government in the 'A Healthier Wales' strategy document. Both recognize that Digital services are a key enabler to transforming the way health and Care services are delivered in Wales, and in enabling patients to have greater involvement in managing their health and well-being.

Tolley, Laura  
06/30/2020 09:41:52

# CTRL-ALT-DEL

Digital as an enabler, not a blocker

Tolley, Laura  
06/30/2020 09:41:52

## Time to reset – Local driver

A staff engagement event (Amplify) in the summer of 2019 to review progress of Shaping Our Future Well-being at its halfway point of five years. A clear message at this event is that many people appreciated the great potential of digital technology to transform our services, but those same people felt that inability to deliver the technology itself and become a significant block to progress. A similar picture had emerged nationally, and in 2018 the Welsh audit office followed by the public accounts committee delivered to hard-hitting and critical reports into the failure of the health system in Wales to deliver at scale or that piece many of the elements set out in the national digital strategy, informed health and care.

## Time to reset – National driver

In 2019 following those national reports, the Welsh government accepted the recommendations of an informatics architecture review, and also announced significant changes to the governance arrangements for the NHS Wales Informatics Service, and the relationship between and the Health Boards and Trusts responsible for delivering services. Importantly, Welsh Government has made available significant increase in funding levels specifically directed towards transformational change, with digital technology as its enabler.

The strategy described here is in line with the architecture review and maintains and updates the direction of travel set out in informed health care.

# Our vision: A Learning Health and Care System

- Digital First for patients and carers
- Digital First for staff.
- Seamless information sharing across professional and organisational boundaries.

## High Level Aims



- Co-production through user-centred design
- Digital as the enabler, not digital as a goal in itself
- Iterative, agile design
- Innovation aligned to strategy
- Democratised data, democratised knowledge

## Principles

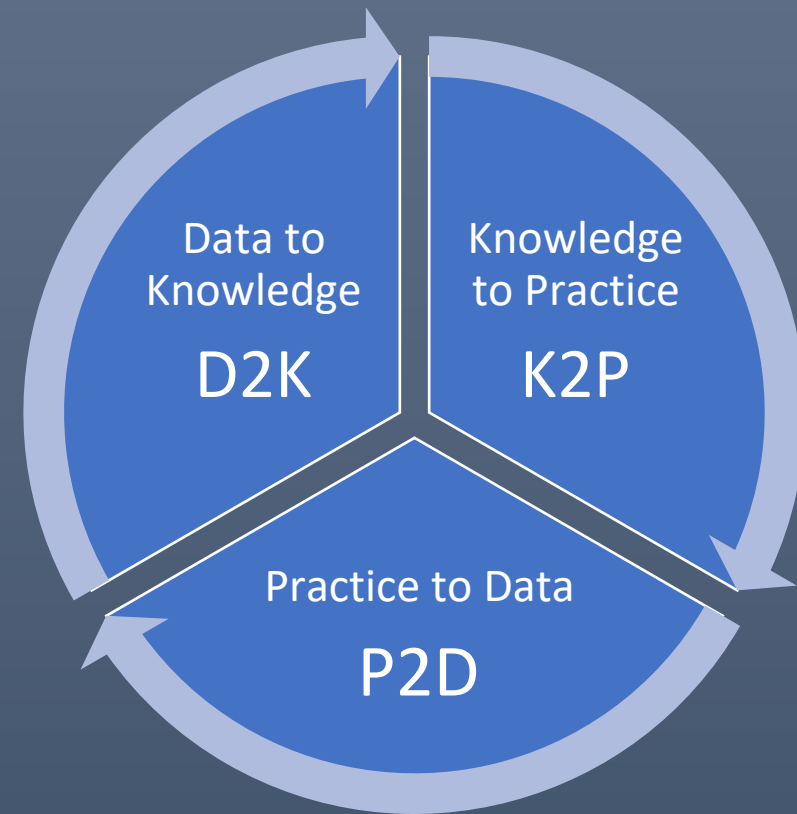


We are all used to using digital services in many areas of our life – banking, shopping, booking a table at a restaurant, leaving feedback about holiday accommodation etc. Health seems to be lagging compared to all other areas. This is a global phenomenon, and not unique to Wales. Health care is acknowledged by information technology experts to be especially complex, with information having to be shared over a large number of organisational boundaries, and tracking many different types of user-experiences through time. And yet it is possible to deliver and track those services digitally. The Baltic country of Estonia adopted a ‘digital first’ philosophy for its public services, including health, several years ago, and is held up as an international example of what can be achieved.

Closer to home, the UK Government Digital Services has revolutionised the way in which we can now use digital solutions to perform many functions which required extensive paperwork and trips to the post office or other government buildings – renewing a driving license or passport, completing a tax return or applying for state benefits for example.

We set out to adopt a similar ‘digital first’ philosophy for Cardiff and Vale University Health Board, enabling users and staff to use digital technology to access services.

# A Learning Health and Care System



By collecting timely, accurate data, we will understand how our system works. We will be able to follow patients through care pathways, learning how we can make them more efficient, and ensuring their journeys are safe. The ability to collect and record patient outcomes means that we can compare ourselves to other organisations to ensure we are providing good quality outcomes.

By collecting patient reported outcomes we will see what works, and what doesn't work. This enables us to put Value Based Healthcare into practice.

## D2K

- By analysing the data we collect it turns into information and knowledge. We can only change and improve our system if we understand it.

## K2P

- We must then use the understanding we gain to inform, improve and transform practice. This is the most important step, and the hardest to achieve.

## P2D

- To collect our data, we will need to enable clinicians and patients to record their activities digitally without interfering with the processes of care. Data must be collected and used in 'real-time' to maximise its usefulness in operational as well as planning services

In 5 years

## Patients

- Patients will access their own health and care records, reports, and results.
- They will be able to see who else has accessed their information. They will be able to view appointments and re-schedule them via digital channels. They will be able to communicate securely with clinicians providing their care. They will have access to supporting health and care information designed tailored for their needs. They will have the power to share their information with anyone they wish to. They will be able to upload information from wearable devices, or care devices which are part of the 'Internet of Things'.

## Clinicians

- Clinicians will access information about individual patients
- They will be able to communicate securely with other members of their clinical team, and in multi-disciplinary teams. They will be able to communicate securely with individual patients and will in many cases be supporting patient care in 'virtual' clinics using video communication technology familiar in other walks of life. securely and reliably via digital channels, which will include their own devices.

## Local/National Data Resource

- The data collected will be used to build the foundation for a Learning Health and Care System
- Timely, high quality data on patient outcomes is used to enable the service to understand what works well, and what needs to be improved. Teams of trained data analysts will work closely with clinicians and service planners to derive knowledge from data. The focus will have moved further towards outcomes rather than the more traditional process measures.

## Our promise

- Patients will be able to choose which information to share, and which they do not wish to share.
- Information will be visible across Wales, and across previous boundaries between primary and secondary care, health and social care, and public and third sector. Appropriate safeguards will ensure personal identifiable data is not shared where it should not be, or where patients have requested it should not be, but the default expectation will be that information will be shared to enable safe continuity of care seamlessly across the system.

Patients will have much more control over how and when they access services, and will be able to access more closer to home

09/07/2020 09:41:52

# Guiding Principles

A system built on data, delivered with care

Tolley, Laura  
06/30/2020 09:41:52



## Persistence and re-use of data

- Whenever digital information is collected, it will be stored in a form that enables it to be re-used by other appropriate applications. For example, if a patient has had an allergy recorded in a hospital clinic, that information will then be updated and re-used by another application used by a pharmacist, GP or other care provider. This will greatly enhance efficiency and safety.



## Co-production through user-centered design

- The introduction of a digital process requires an understanding of what it means to the service users – both patients and clinicians. When introducing new digital solutions, patients and clinicians will therefore be involved in deciding what it should look like, where it fits in to their view of the service, and what benefits it might bring.



## Digital as the enabler, not digital as a goal in itself

- Simply digitising a process seldom brings any benefits. It should instead provide an opportunity to review and change the care process, which will have been established around paper-based processes.



## Iterative, agile design

- It is tempting to try and do everything at once, and to sponsor large-scale centrally controlled projects to achieve this. The so-called 'waterfall' approach does not generally work in digital health care. By the time the required governance and procurement cycles have been worked through, the digital landscape has often changed, and the solution acquired (and committed to) has been superseded. Instead, it is better to break projects down into smaller chunks using small, focused teams working in 'sprints' to achieve digital solutions which will be 'good enough' (although safe) rather than perfect initially, but which will then be changed in response to user-feedback in an iterative manner.



## Innovation aligned to strategy

- CAV will continue to foster and encourage innovation, but will ensure that it is aligned with the digital strategy, and that any digital elements of innovation projects fit in with the digital architecture, and are capable of being scaled-up if they prove successful.



## Democratise data, democratize knowledge

- The data collected by the organisation will produce large pools of 'big data' which is the foundation for the learning health system. With appropriate safeguards, this data will be made available to clinicians, managers and analysts across the organization. There are myriad ways of using, visualizing and interpreting data, and even in 5 years we will still only be beginning to understand how to do this. We need therefore to permit multiple stakeholders to innovate in making use of this data and turning it into knowledge. We will not constrain ourselves by assuming there is only one way of interpreting data – there are many ways to the truth!



# Achieving the Vision

Stuff, Staff, Adaptive Change



Tolley, Laura  
06/30/2020 09:41:52

# Infrastructure



## Desktops and Mobile

- Single Sign-On.
- Device agnostic.
- Bring your own device.



## WiFi and networks

- Always-on networks 'The five 9s': 99.999% uptime
- Wi-Fi with full coverage for patients and staff
- Wi-Fi roaming



## Communications and Messaging

- Secure e-mail within Health and Care in Wales, to NHS England
- Secure messaging including patient data
- Video conferencing within Wales, and with the rest of the UK



Without the basics, nothing else will be possible.

Before going further in this document, the importance of adequate infrastructure has to be highlighted. Without up to date devices, networks and wi-fi, any attempts to digitise the future will fail. We operate, and will always operate, in a resource limited environment. In those circumstances it is often tempting to cut costs in the less visible foundations of our services, and this has included technical equipment, associated staff and cybersecurity. This was recognised in the Welsh Audit Office review of Health Informatics in organisations across Wales in 2018. We recognise that failing to invest in and maintain infrastructure is ultimately counter-productive. It weakens the foundations of our digital system, and without these foundations no sustainable developments can take place. We will have to accept that much of the initial investment in our digital future will be used to address the under-investment of the past. Once that balance is restored, it can't be allowed to slip again.

# Cybersecurity

this section will describe the improved cyber security arrangements enabled by the National investment secured last year

Tolley, Laura  
06/30/2020 09:41:52

# Information Governance

This section provides a summary of the approach we wish to take to information governance.

Collecting health and care data on patients and service users requires then to trust our organisation to look after their data carefully, ensuring that only those who need to see the data access it, and that we safeguard it against inappropriate access or inappropriate sharing.

Legislation requiring us to do this in terms of common law duty of confidentiality and the general data protection regulation as well as the computer misuse act as an important safeguard for the public's trust. If we preach these rules we lose the trust of the public, and we will therefore not be able to use the information they share with us to benefit then and the system as a whole.

It is also important that data provided to us by clinicians is shared appropriately. Most patients think that we readily share information between clinicians, teams and other carers involved in providing services, and are often surprised if they discover this is not the case. In the past there has been a tendency to take a very restrictive approach when interpreting data protection legislation.

We need to take note of the general data protection regulation intention which is to enable information to be shared much more easily when it is appropriate to do so, but to give patients and carers the ability to control this without interfering with the processes of care. We are seeking to strengthen our information governance processes, and to ensure that important organisation level decisions about information sharing are taken in a proportionately taking into account both the clinical risks and their information governance risks, and involving legal and patient informed processes.

The working in this section to be modified by James, and also have a section about relationship with research.

Tolley, Laura  
06/30/2020 09:41:52

# Digital Inclusion

## Digital Inclusion is a social determinant of health

Like other inequalities, this means we need to ensure we take steps to address this imbalance so everyone in our community can take advantage of the digital future, and nobody is left disadvantaged

We will adopt the recommendations of the Gann report: 'Digital Inclusion in Health and Care in Wales'.

The Inverse Care Law applies to digital inclusion as it does to other aspects of healthcare. Sections of the population most in need of improved access to health care are also those less likely to be 'digitally included'.

85% of people in Wales use the internet – that means 15% do not.

### Mainstream Digital Inclusion

Digital inclusion needs to move from the margins to the mainstream. The Gann report describes how local authorities have been more effective in digital inclusion than health care organisations. We will work with local authority partners to develop a more detailed and a more robust strategic approach to digital inclusion.

### Use levers and Enablers

We will ensure that Wi-Fi is available freely across our health and care settings for patients and carers to use. We will invest in the Digital health literacy of our health and care staff to help ensure digital adoption by patients and service users., and frontline staff will be supported to become digital champions for their patients.

### Scale Up Inclusion

We will sign up to the Digital Inclusion Charter. Without digital inclusion, the potential benefits of the patient channel work will not be realised. We need to learn from existing initiatives like Digital Communities Wales so we can ensure vulnerable people are not excluded from the benefits of digital.

### Improve our knowledge

We will use the framework and tools available in the NHS Digital Inclusion Toolkit, and adopt any similar initiative that is developed in Wales. Even with digital skills and access to technology, people will not use digital health tools if they are not accessible and meaningful to them. Our promotion of user-centred design of all digital health products will include people who are less experienced digital users.

## Internet use in Wales

People with a long-standing illness or disability	74%
Without disability	90%
Age 65-74	72%
Age 16 – 49	97%

# Achieving the Vision Stuff

How we will build the digital vision



Tolley, Laura  
06/30/2020 09:41:52



# The Digital Architecture: understanding the lingo

## Data repository

At the heart of any informatics or digital system is data stored on a computer hard drive, or where there is a lot of data, an array of hard drives (called a server).

Ories. The data held in these drives is usually organised in the form of a database or a collection of databases into which data can be added, removed, rearranged and analysed, either by programmes within the database or separate computer programmes.



## Applications

The interface on the computer or mobile device which puts data into these databases or allows the data to be viewed are often called applications.

These applications are sometimes associated with programmes that manipulate the data in the ways described above, but increasingly such programming takes place 'server side' making the applications much simpler, and enabling easier 'plug and play' potential.

When used on mobile devices, these are usually referred to as 'apps'.



## Application Programme Interfaces (APIs)

These are, in effect, the connections or plugs which allow an application to interact with the data repositories and associated programmes.



## Systems

Where a series of databases and applications exist for a particular 'business domain', for example pathology laboratories, the collection is referred to as a 'system'. Each of these individual systems can either be acquired individually in a modular fashion, or as part of a large mega suite of many systems.



# The Digital Architecture

## Option One: the status quo

Once for Wales: modular 'systems'

An enterprise architecture can be built up gradually, using the best available versions for particular business domains. The disadvantage of this 'best of breed' strategy is that the systems are often, in effect written in different languages, and in order to communicate with other systems, translation is required. In the digital world this is referred to as 'interoperability'. This is complicated by the fact that many of the health organisations in Wales already had some modular systems of their own.

Cardiff and Vale have many dozens of information silos or information systems which have evolved over the years. In order to derive the full benefit of all this data, all of the systems which share information, but this would require very complex and labour-intensive translation. In fact, this requirement is so complex that experts question whether achieving interoperability for a health enterprise architecture in this way is even achievable.

This is broadly the approach that has been taken over the last few years in NHS Wales. This approach sought to either self-build or procure modular 'systems' to be implemented, usually as large national level projects rolled out across health boards in a staged fashion. These projects were centrally controlled and co-ordinated, but beset by delays, hampered by differing informatics architecture in different health boards and trusts, differing levels of digital maturity, and differing opinions as to the suitability and need for a given system in each organisation. Local organisations were unable to develop at their own pace, and to address their local priorities, but instead were constrained by a slower, less agile national approach. The Welsh Audit Office and Public Accounts Committee reviews of 2018 were critical of this way of working, and called for change. The architecture review commissioned by Welsh Government and published in 2019 calls for an end to this approach.

One positive benefit of the national level approach has been the ability to share information across health board boundaries, and is the envy of some of our neighbours.

## Option Two: Megasuite

Cerner, Epic, System C...

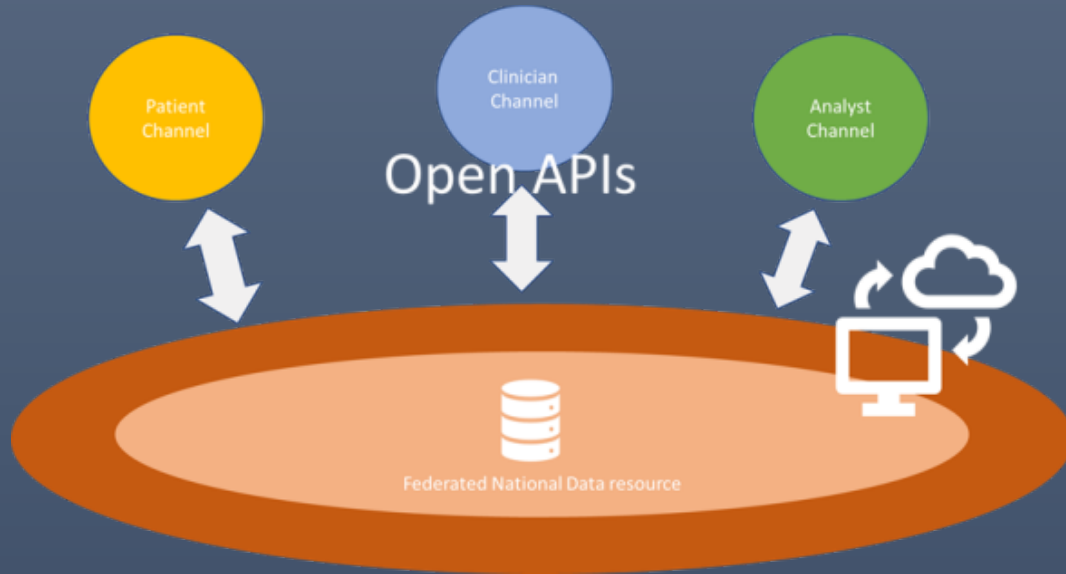
The second approach described is where a large provider has suite of systems written effectively in the same language and able to communicate with each other, providing digital part for several business domains, such as an electronic health record, electronic prescribing and decision support, and a laboratory system. The disadvantage of this approach is that such systems are very expensive, and even at best the provide less than 50% of the digital components for a typical healthcare organisation. Furthermore, these implementations, which are often called platforms, will generally only communicate with platforms created by the same provider. Thus if you are neighbouring health or care organisation uses a platform from a different provider you will not easily be able to share information, and it takes the service back to the interoperability problem. These can be considered closed platforms. This is an increasing problem for healthcare systems who have implemented mega suites.

This is the approach that has been taken over the past few years in NHS England where mega suite implementations using suppliers such as Cerner, Epic and Lorenzo have been implemented in the most digitally mature organisations (i.e. those with the infrastructure to support them), so called Global Digital Exemplar organisations and latterly, Fast Followers.



# The Digital Architecture

## Option three: Open Platform



### Open, but not uncontrolled

Health data includes sensitive personally identifiable information. It is important to be clear that what is meant by 'open APIs' is that the configuration of these virtual plugs is made available only to developers of products who are trusted to hold such data by satisfying strict Information Governance requirements, and stringent Cyber-security standards. The APIs being 'Open' means that if they have achieved this status, they can design their solutions consistently with APIs made available to them, which increases the speed at which solutions can be developed.

### What is an Open Platform?

The approach advocated by the architecture review is based upon the concept of an open platform. In this central collection of data is maintained according to a set of strict information and technical standards. This is particularly important because by ensuring that everything is recorded and described in the same way, and stored in the same format, the information can be retrieved and used reliably without the interoperability problems discussed above.

### Mandated standards

The information platform can be imagined to be surrounded by a series of interfaces or virtual plugs the application program interfaces (APIs). These enable applications to contribute, view and analyse data in the way described above in applications integrated with other systems. However, the applications in this model are not specific to a particular system, but rather conform to the data and technical standards of the platform. This makes the process of introducing new applications when they emerge, and replacing old ones when they are superseded much easier.

### Encourage innovation

By making the APIs open to trusted organisations and trusted suppliers, they can develop applications much more quickly and easily to the benefit of the service. This enables a flexible and agile approach for how our organisation and others in Wales collect, view and analyse patient information. The APIs can be designed to communicate with devices such as fitness trackers, heart rate monitors, medication pumps et cetera so that data can be provided in real-time without the need for staff for patients to input anything themselves. Much of the growth in the wider Digital Economy has occurred because suppliers have made their APIs 'open'.

### The 'Single' Electronic Health and Care Record

The data collected on this platform can be used to inform individual patient care, as each element of data is identified as belonging to a unique patient, in this way you can see that the concept of a single electronic health record becomes difficult to visualise, because over time so much information and data could be gathered not just from individual interactions in clinic or hospital admissions in the way that traditional hospital wards are, but including information recorded on monitoring devices as described above. The single electronic health record actually becomes an enormous collection of data which can be visualised in a number of different ways according to the application suitable for the purpose at hand.

## Clinician Channel

### The 'Electronic Health Record'

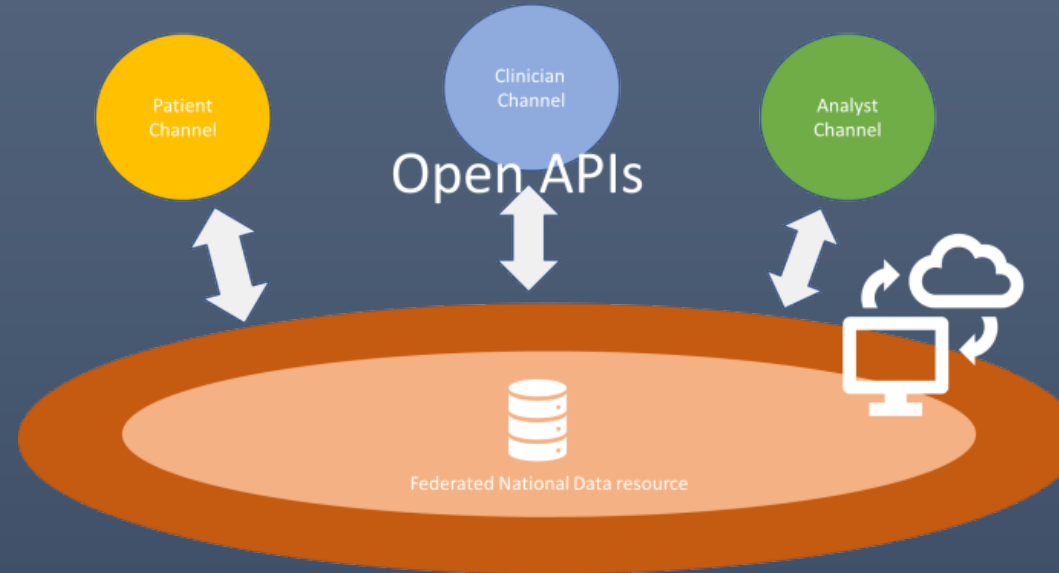
Applications used by clinicians to view results and reports, record clinical interactions and procedures, view images, prescribe medications, communicate with other clinicians.

## Patient Channel

### The 'Personal Health Record'

Applications used by patients to book appointments, view results and reports, record outcomes, communicate with clinicians.

In effect, this creates a personal health and care record. Patients may upload information in symptom diaries, data from wearable health and fitness devices, and may choose to share some or all of this with clinicians providing their care.



## Analyst Channel

### Data to Knowledge

The applications which can interact with data at various levels of aggregation from individual to population level which enable data to be turned into knowledge to understand, learn from and re-design the system.

## Data Resource

### Persistent and re-usable data

This is the pool of data held in accordance with strict information and technical standards so that it can be understood by and interact with applications via APIs. It is supported by an infrastructure that ensures its security.

It's physical location. The resource will actually comprise several 'local' data resources created by Health Boards and Trusts together with some nationally hosted resources – a so-called federated model. Although physically disparate, they exist in a single 'cloud' architecture.

Bear in mind that these 'Channels' are a conceptual representation to help understand how things fit together. In reality, many applications will overlap in terms of the users.

Tolley, Laura  
06/30/2020 09:41:52

# Once for Wales?

## Alignment to National Strategy

One of the reasons highlighted in the Welsh Audit Office report of 2018 as leading to a lack of pace and scale in digital implementation in the Welsh health service relates to numerous attempts to ensure our Once for Wales approach to large systems.

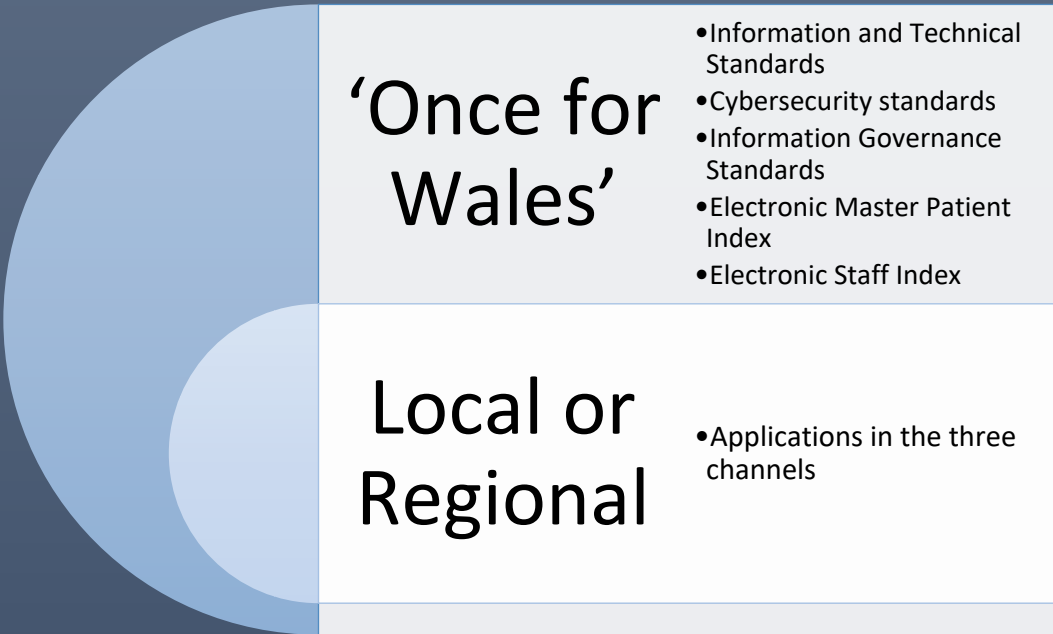
## Lessons from abroad, lessons from home

It was clearly very attractive to think that for particular business domains one system across the country could be implemented very easily and with rapid agreement. This approach has been demonstrated in health systems across the world to be very difficult or impossible to achieve. The reality is that all organisations are at a different point in their digital journeys, and some have good systems for one business domain, and pure systems for another, but these won't necessarily correspond to those of the neighbours. The open platform approach requires that everyone agrees to provide information using the same standards and using the same technical organisation structure for the data, but leaves organisations free to source their own applications in a forum and at a time that suits them, and doesn't interfere with the operation of any other organisation.

## Cultivate collaboration, mandate sparingly

Of course it may be the case that because applications become smaller and easier to design using open APIs, it may be easier to reach a national agreement to use a particular application for a particular business domain where there is a shared need and shared opinions, but importantly it need not be a mandatory requirement. Collaboration is probably more likely to occur as these applications, and the markets around them evolve in the next few years, but while that process is taking place it makes more sense to allow some flexibility at local and regional level.

Because of the importance that information in the platform is effectively written in the same language as explained previously, then it becomes very important that organisations agree to adhere to the information standards and the technical standards describing how that information is organised. It therefore means that once for Wales means the platform in the middle, but doesn't necessarily mean the applications around the outside.



## Working with our neighbours

Some of the elements required to build a Digital First approach may be more efficiently achieved by collaborating with our regional neighbours in Aneurin Bevan Health Board, Velindre NHS Trust and Cwm Taf University Health Board.

We will seek to build close working relationships around shared infrastructure, and seek to share learning with these organisations.

# Local and National Data Resource

## Building a Local Data Resource

### Legacy data

In order to build a useful local data resource, which will in turn become part of the national data resource we need to make data we currently hold in individual data repositories available. This is not a simple matter of 'emptying' data into a new set of databases, unfortunately. The data needs to be 'translated' into a form that makes it available in a standardised format. This is called making the data 'interoperable'. This makes the data available to applications in the three channels referred to earlier.

The widely adopted standard for interoperability across health systems is called Fast Healthcare Interoperability Resource (FHIR) – pronounced 'fire'.

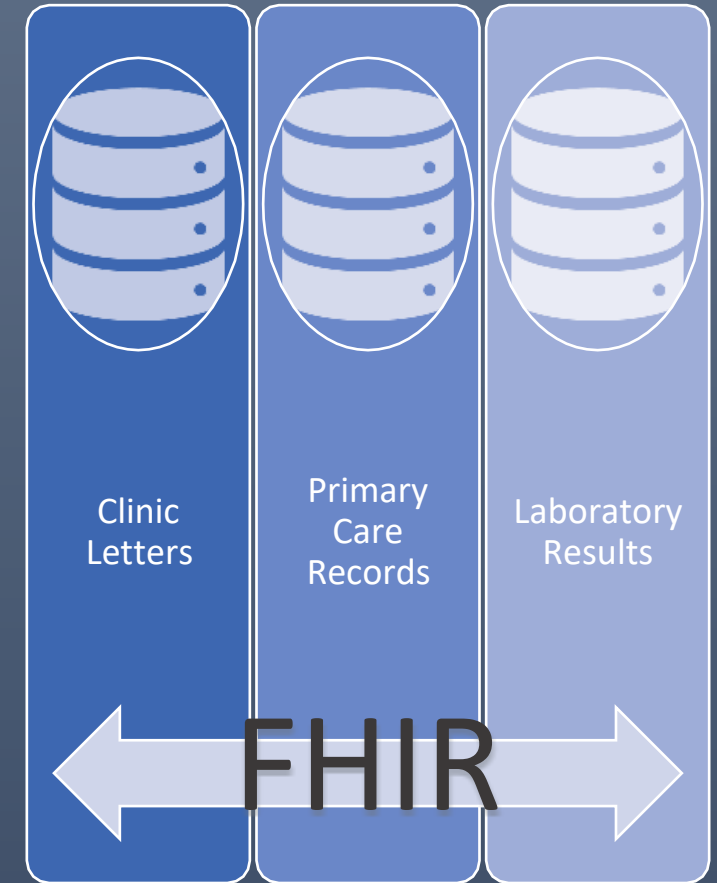
We will need to procure FHIR servers to store this data, and undertake work to convert legacy data into this format. This data varies from large stores of clinic letters, to smaller disease registers and bespoke team-specific databases.

### New data

The disjointed silos of information we now seek to harmonise must be avoided in the future. Our strategy will be to avoid the creation of any information silos, and instead require that the data is FHIR compliant, and this will be essential for any third-party suppliers to comply with.

### Open EHR

We will also look more favourably on products that use the Open Electronic Health Record structure. Using this approach, the data is effectively placed straight into the data resource without the need for translation.



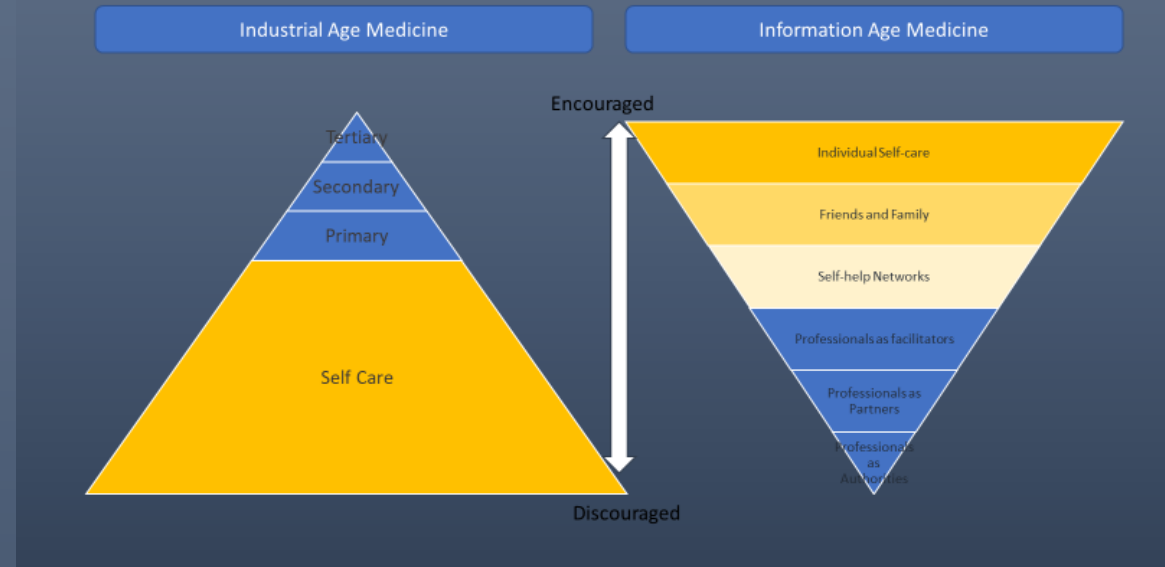
# Patient Channel

## Giving patients control

A famous diagram represented on this page shows Tom Ferguson's inverted triangles model when he forecast the likely effect of technological advances on patients' expectations of care.

This is entirely aligned to Prudent Health Care principles, and the strategy described in A Healthier Wales of enabling care closer to home, and providing support for patient's to maximise their well-being.

By allowing patients the ability to control their own journeys through healthcare, they benefit, and the whole system benefits. We can start to re-shape outpatient services such that patients are seen only when they need to be seen, and enabling interactions to take place remotely using video communication.



## What will patients be able to do?

We want to allow patients to access test results without needing to come to clinic or to phone a service desk. We want them to be able to book and change appointments, record their outcomes (Patient Recorded Outcome Measures) and experiences (Patient Recorded Experience Measures).

They will be able to give access to carers or relatives, as they wish, and to be able to see who has access to their data.

There will be some information which it is inappropriate to share online, and where it may be harmful to see results without a face to face explanation, they can still be hidden, so the applications we use will need to allow some control of sharing from the clinician's as well as the patient's side.

## National Patient Portal

We will collaborate with the national Patient Portal programme, which will provide a single secure portal which authenticates a patient's identity, and then allows access to various applications providing some of the functions mentioned. There will be more which evolve in future, and we will want to enable flexibility in enabling many applications to address functions which serve patient care as they become available.

But we don't have to wait until the portal is developed – we can go ahead and start to use some available applications in the meantime, using the principles described for the open platform approach.

# Clinician Channel

Electronic Patient Record for Secondary Care  
Community Care Record  
Mental Health Care Record  
Social Prescribing  
Patient observations  
Electronic prescribing

## Viewing data

Clinicians must be able to see comprehensive information to inform the best care decisions for their patients. This will include information from their GP and community services, different secondary care settings, social care and third sector organisations. Many of our services are provided across a regional or National footprint, so the information must be visible across health board boundaries. 30% of our organisation work in the community, and it is vital that they can access this information via mobile devices. We know that increasingly our challenges relate to patients with multiple conditions, and in this group, care information is created in a large numbers of different settings.

Many patients would expect that we already allow information to flow seamlessly across these boundaries, and it is starting to. By putting our information onto one platform based on a Local and National Data Resource we can achieve this for everything.

We are already good at sharing clinical information, including laboratory results, clinical letters and reports and radiology images across health boards. We share images across primary care to secondary in Dermatology, and images of eye-conditions taken by local optometry services with secondary care ophthalmology services, but these are still pockets of digitally-enabled care rather than mainstream. We need to ensure that where such initiatives have proven successful, they will be scaled-up. This will be helped by improving our business change processes to ensure appropriate evaluation of project success, and also by describing scale up plans (and resource) in development cases.

Tolley Laura  
06/30/2020 09:41:52

# Clinician Channel

## The importance of coding

Making sure that information is recorded in a consistent way, and that each data item's meaning is interpreted correctly across applications, we need to fully implement the SNOMED-CT system. This stands for Systematised Nomenclature of Medical and Clinical Terms, and is the international standard, and has been formally adopted by the NHS in all Home Nations. Any systems we implement to act as data entry points to the Local and National Data Resource will need to have SNOMED-CT capabilities, and we will be working with local projects and with NWIS to enable this. Clinicians using the system will be able to pick from bespoke lists of commonly used terms to speed up data entry. The advantage of SNOMED-CT comes when data is aggregated, and clinicians want to understand features of patients with the same diagnosis, groups of diagnoses, particular procedures etc. It's hierarchical and conceptual nature will revolutionise how individual clinical team members can start to do their own exploration work for their patient groups, and it will greatly improve how the system can learn. For a better explanation of some of the detail see the [NHS Digital](#) website. For a simple animated explanation [try this from NWIS](#)

## Entering data

Although we are getting better at sharing data across boundaries, that data is often not 'rich'. Much of our clinical information is held in the forms of clinical letters and discharge summaries. The information contained in these 'flat files' is not available to a computer to use – it needs to be read by a human being. All a computer can see is a document title, and some other coded information attached to it as 'metadata'. Our Patient Management System (PMS) records some information in a coded way where each item of data can be 'computed'. This is only a fraction of the clinically meaningful data we should be collecting, and in fact most of it is demographic content and a description of 'episodes' (admission, discharge, new clinic visit etc.). We Also know that even this small amount of data is not always correctly 'coded', and provided in a form that computers can do useful tasks with it, and we know that a lot of this coded information is incorrect. This, in turn makes information derived from it inaccurate or misleading.

We need to collect much richer data, we need it to be more accurate. We can do so by using a 'virtuous circle' effect of making data more visible. By improving the detail in information we 'code' (i.e. put into computable form), we will need to ensure it is entered in 'real-time, not as a bulk exercise from memory at a later time. This requires much more readily available devices to enter the data – but that also makes it easier to see pre-existing data. Because we will be using a platform around the national data resource, information which already exists (demographics, medicines, allergies, advanced care plans, problem lists), fields in data entry applications can be ready-populated making the update process more efficient. The process of real-time data entry will make the data more accurate.

Aggregated information will be available to clinical teams, and because this information is timely, any inaccuracies can be corrected quickly, and the data become useful. Much time currently is spent trying to derive information from data that we know is unreliable – over the period of this strategy, the quality of data will be driven up, its usefulness will be driven up, and the conversation will move away from disputing the data's accuracy, and onto converting what the data says into knowledge.



# Clinician Channel

## The electronic patient record (EPR)

For most of our clinical users in secondary care, a big gap in our digital capability is the 'front end' for putting this coded information into the LDR/CDR. We have some ability to put information in via either Welsh Clinical Portal and CAV portal, and some bespoke systems which input particular clinical-service information, often as part of a disease registry. In Mental Health and Community services we do have better functionality using PARIS, and we will evolve to contribute information collected in this way into a Welsh Community Care Information System (WCCIS).

Our strategy will be to develop a single entry portal where clinical information can be entered via any device from any location, but behind this portal the user will have the ability to access the information most important to them for a particular type of clinical interaction. This will involve a library of applications bespoke to particular user-requirements, but for the clinical user it will simply appear as one single interface, and will avoid the need to log in to multiple 'systems'. This may or may not be Welsh Clinical Portal. The Architecture review requires that some work is done to 're-platform' WCP to enable they type of arrangement just described, but it would also enable the use of another portal providing exactly the same functionality, giving us a choice as an organisation to adopt the interface our users prefer.

We are already starting to develop such a 'front-end' EPR for use in outpatients, currently called COM-2. It uses SNOMED-CT, and provides and retrieves data stored in the appropriate standards for the LDR/NDR.

## Further into the future

This is a very rapidly evolving area. We know from health care systems that have had long-standing EPRs that the clinical users are not always in love with them. There is a feeling that the computer can start to come between the clinician and the patient. In the USA, hospitals have begun to employ teams of 'medical scribes' who record and enter information on behalf of clinicians who are better able to converse and make eye-contact with their patients rather than their computer screens. This is not a viable long term solution, but another emerging digital technology is. Natural Language Processing (NLP) is a use of machine learning/artificial intelligence algorithms which can 'listen' to a conversation and 'understand' what is being discussed, and what the outcomes are. If the current pace of evolution continues, then NLP may become our data entry assistants. We will continue to watch this space.

Tolley, Laura  
06/30/2020 09:41:52



# Analyst Channel

1. The learning health system
2. Outcomes over process
3. Analysts and data science working closely with clinicians
4. A 'learning' environment
5. Partnership with Universities and Industry

in this section talk about the fact that data is the most important way in which would be able to understand the services that we provide, whether being provided well whether the being provided in a timely fashion and whether the outcomes of good. The conversation here about how we make business systems visible to all clinicians across the organisation and there is a conversation about how we maximise the benefit of modern business informatics systems to generally automatic reports as well as self-service stuff

We also need to have a discussion in this section about the fact that telling the data into information is extremely important, but is quite difficult. That involves four relatively basic data good visualisation and an ability to have informed conversation with clinical users who actually unable to interpret what might be going on to explain some of the patterns described in the information.

Beyond this we need to make point that artificial intelligence requires data as its fuel and its only with this data resource that will be able to fully benefit from a high as it evolves.

## WE NEED TO TALK ABOUT AI

This will be a short section emphasizing that AI is something to embrace, not fear.

Sometimes we are already using it because applications may be engineered using AI or Machine Learning.

The substrate for AI that we want to develop ourselves and with partners is good quality data held in a computable format. That is largely only available for images currently – we need to move to a world where it can be true of other clinical information recorded during care episodes.

# Turning data into knowledge



Data doesn't turn into knowledge by magic. It is a process. It starts with good quality data, and requires people with different skill sets to visualise and explore patterns in the data. Features of interest may then be studied, and statistical learning techniques applied to this data to turn it into knowledge, and enable a deeper understanding of what happens to our patients, and of the services we offer. This requires clinicians working closely on a data to day basis with data analysts.

At it's most advanced level, the so-called 'statistical learning techniques' include machine learning, deep learning and artificial intelligence.

Currently we do visualisation, but then tend to jump straight to the end of the process, assuming we have understood the data and turned it into knowledge. For example, we look at historical activity data and extrapolate it to 'forecast' the future. This has utility, but is only scratching the surface of what we could do.

## Quality 'real time' data

- An electronic health and care record
- Structured data
- Local and National Data Resource

## Analytic capability and capacity

- Analysts
- Clinicians to work with analysts
- University partners
- Industry partners

# Achieving the Vision Staff

Who will build the Digital Future?



Tolley, Laura  
06/30/2020 09:41:52



# Wachter principles

## It's about the people, stupid

Dr Robert Wachter's seminal report into the failure of NPfIT in England established ten basic principles to learn from. We recognise that these lessons are not unique to England, but are generic, and apply to Health and Social Care digitalisation in Wales as elsewhere.

The overarching message from this report is the essential need for clinical engagement in the process of digital transformation.

Digitise for the Correct Reasons.

- Don't digitise for the sake of it – digitise to re-imagine how things can be done

It is Better to Get Digitisation Right Than to Do it Quickly

- Balance the immediate operational drivers with the overall strategic aim.

Return on Investment from Digitisation Is Not Just Financial

- There is a productivity paradox. It will take time to bed-in, it will take to transform – be patient, and evaluate against more than the bottom line

Balance appropriately between local/ regional control and engagement versus centralisation.

- Standardise the central architecture, but allow organisations and teams to innovate and set their own pace and priorities

Interoperability Should be Built in from the Start

- Today's solution is tomorrow's legacy. We know that our information systems need to speak the same language, so don't make life difficult for those who will inherit what we create.

While Privacy is Very Important, So Too is Data Sharing

- Information Governance Legislation (GDPR) has been introduced to encourage sharing of data safely and securely, not hinder it. Patients expect us to share their information to enable seamless, safe, efficient care.

Health IT Systems Must Embrace User-Centered Design

- Start from the patient's perspective, and involve patients in re-designing systems.

Going Live With a Health IT System is the Beginning, Not the End.

- This is probably the most common mistake, and the biggest contributor to failed digital implementations. Digital solutions only work when people understand them, can use them, and know what they can enable – and that involves time and effort.

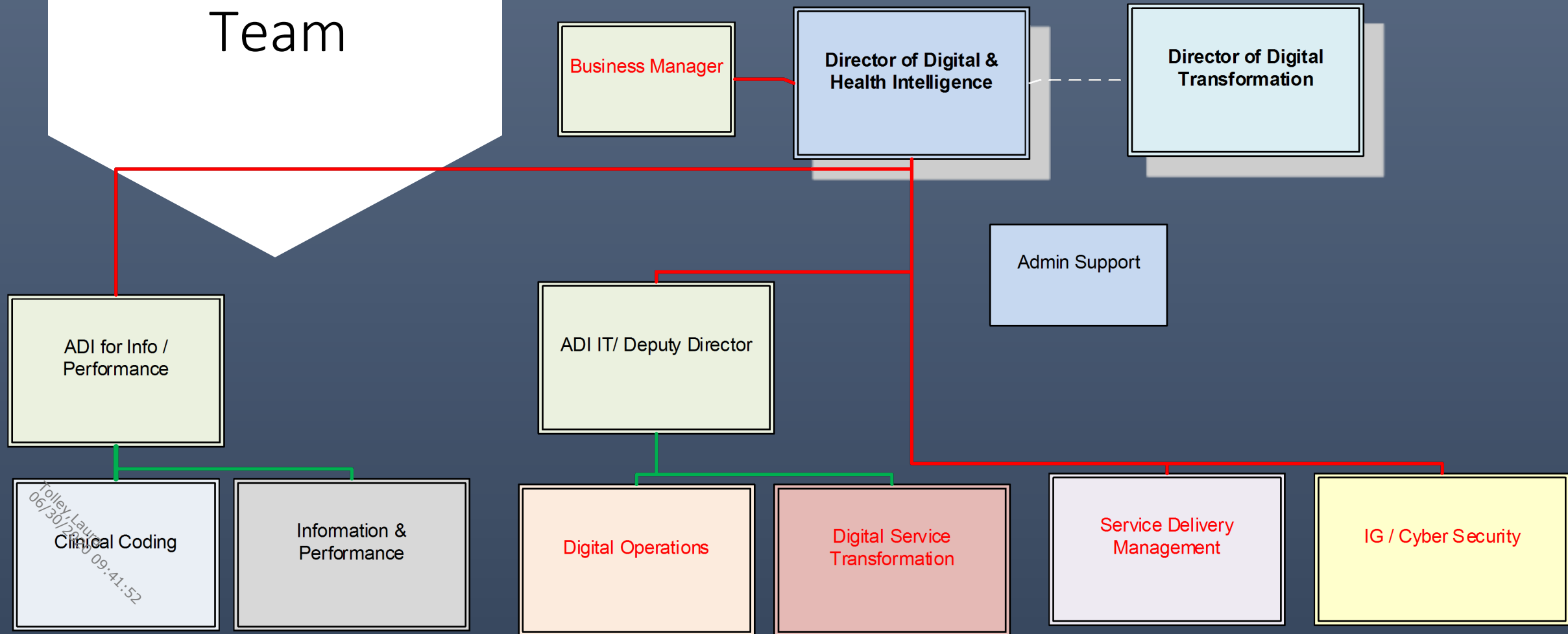
A Successful Digital Strategy Must be Multifaceted, and Requires Workforce Development

- If we want our users to benefit from digital solutions, our staff have to be enabled to use them. If we want to build a Learning Health System, we need to train and retain staff to analyse and derive knowledge from the data we collect.

Health IT Entails Both Technical and Adaptive Change

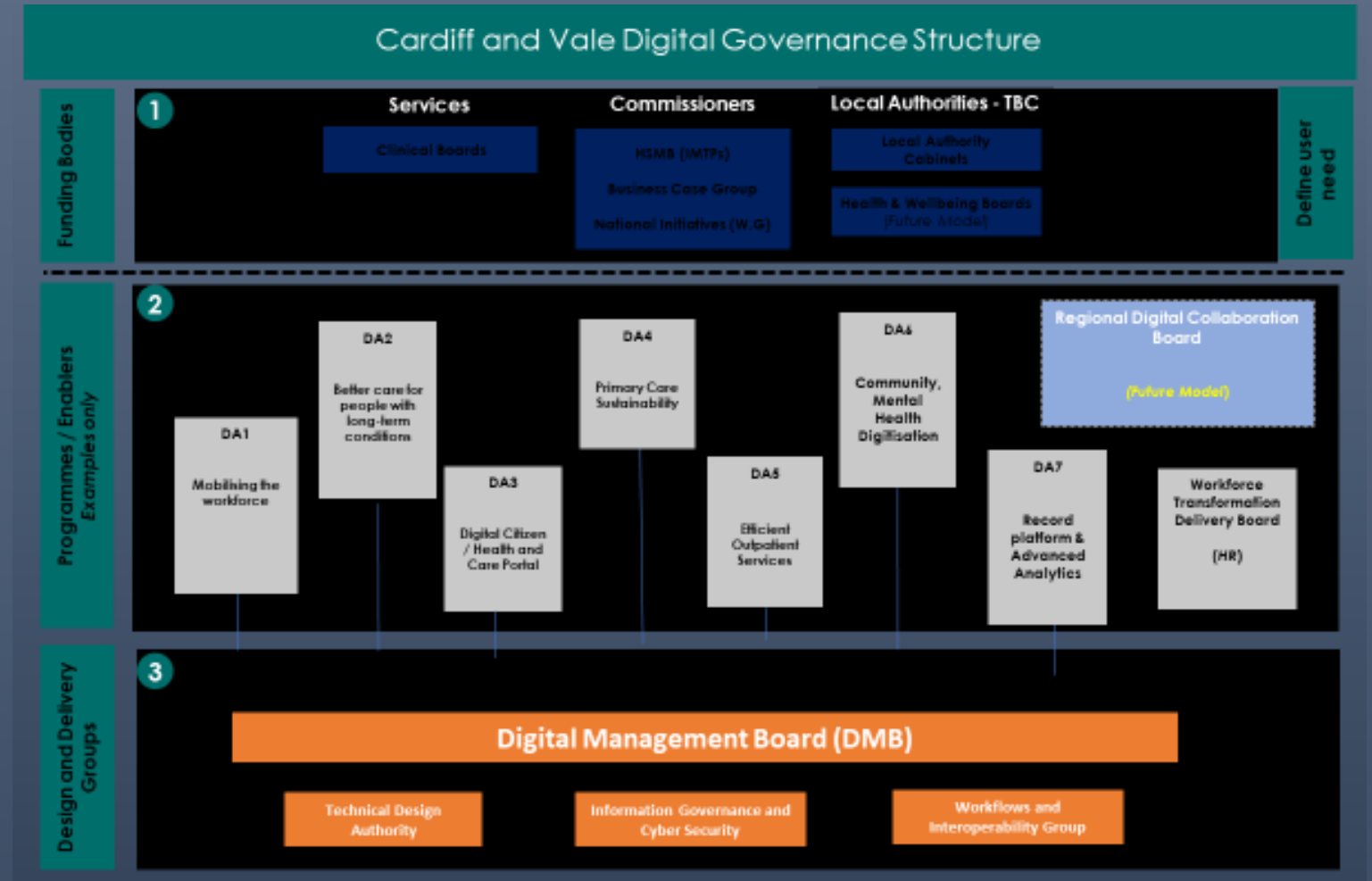
- Health and care systems are complex. Technical fixes alone cannot solve their problems. Staff and users must be able to transform the way they interact with services to achieve the quadruple aim of health and care. Clinical engagement is the key.

# The Digital Team



# Governance

How digital is managed, co-ordinated and strategically aligned



Tolley Laura  
06/30/2020 09:41:52

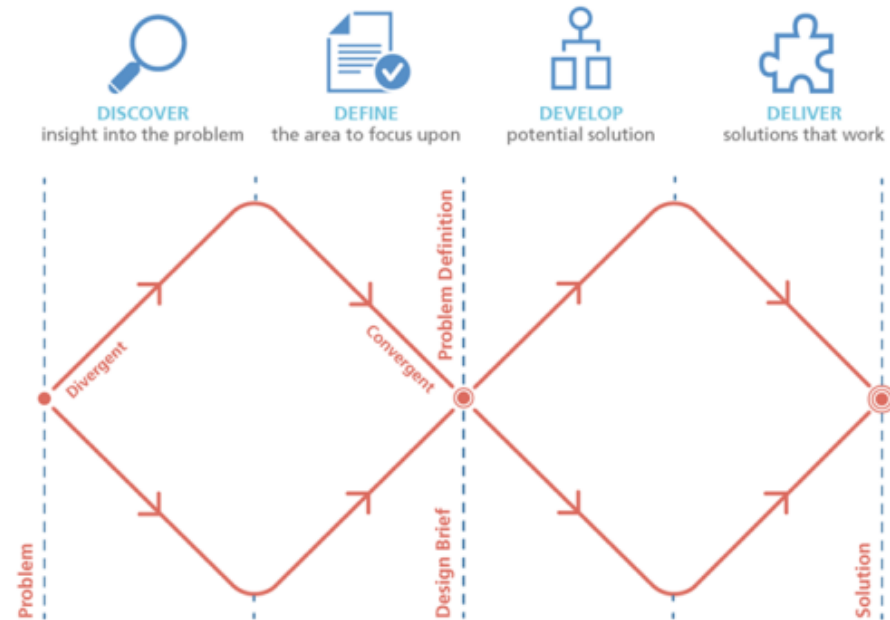
# Achieving the Vision Adaptive Change

Using digital to transform the future



Tolley, Laura  
06/30/2020 09:41:52

# Design Principles



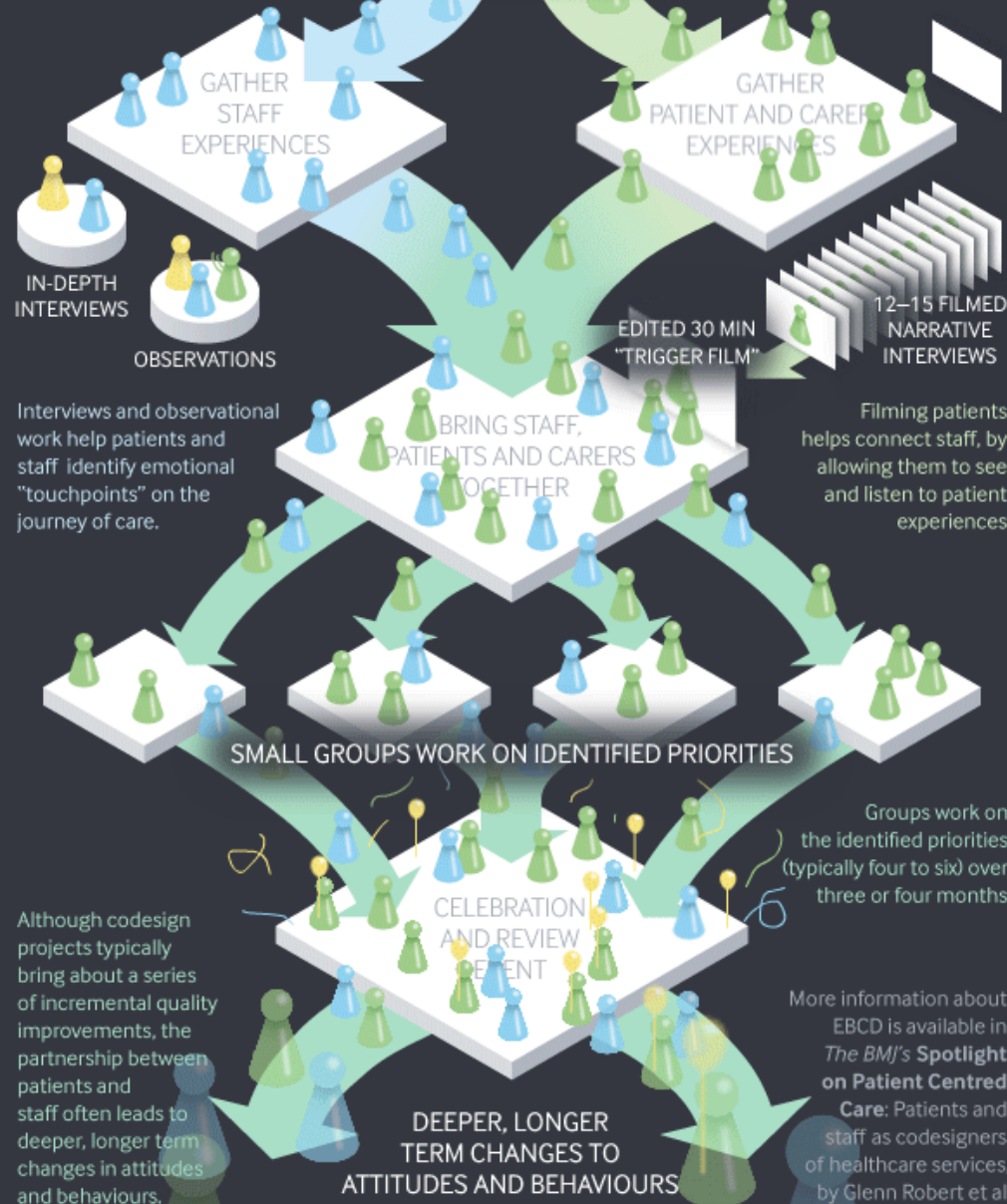
Adapted from The Design Council Double Diamond framework



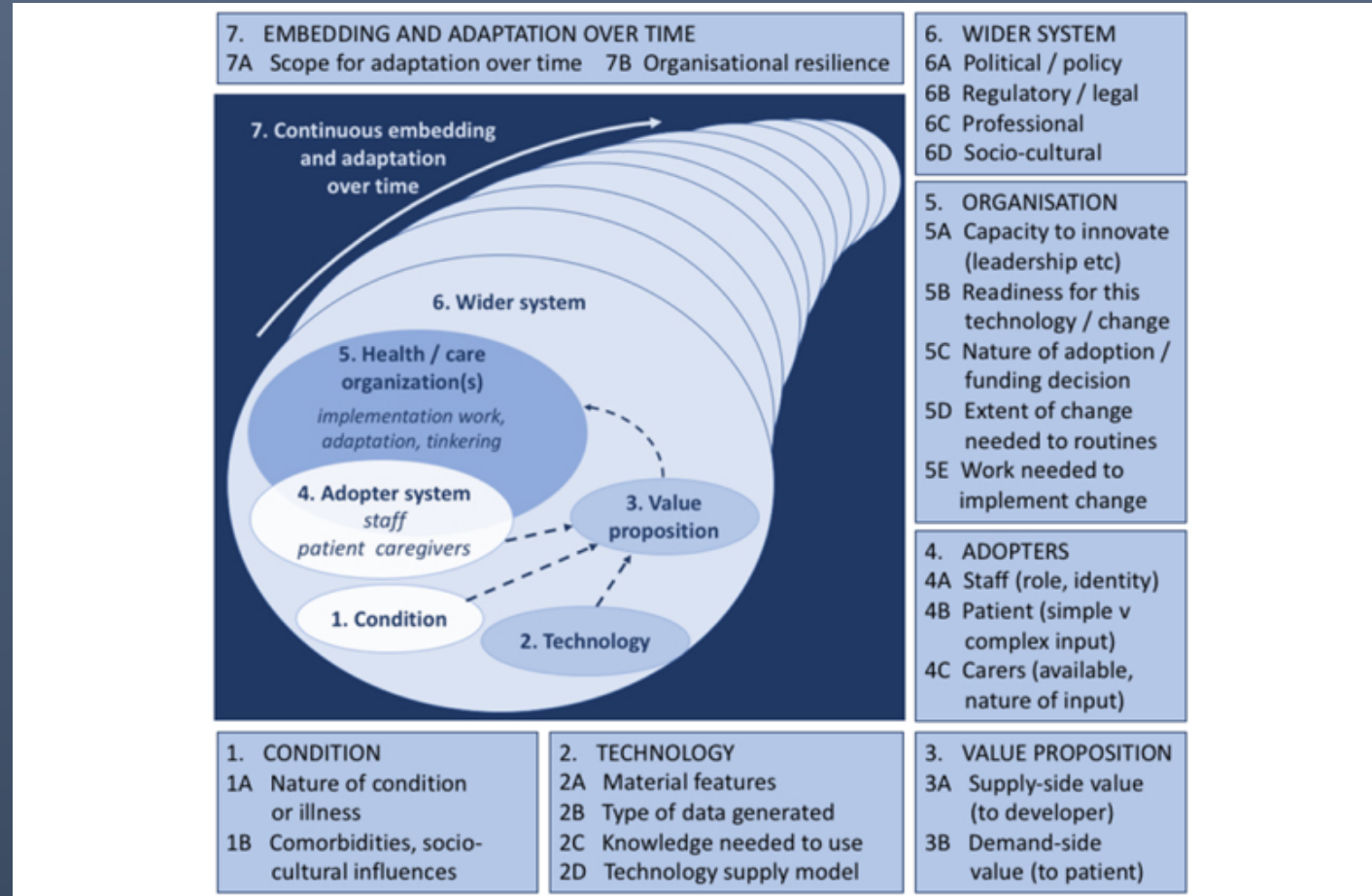
# Codesign of health services

## PROJECT SET-UP

This infographic explains Experience-based Co-design (EBCD), a six stage process that usually takes nine to twelve months.



# Evaluation



Tolley, Laura  
06/30/2020 09:41:52